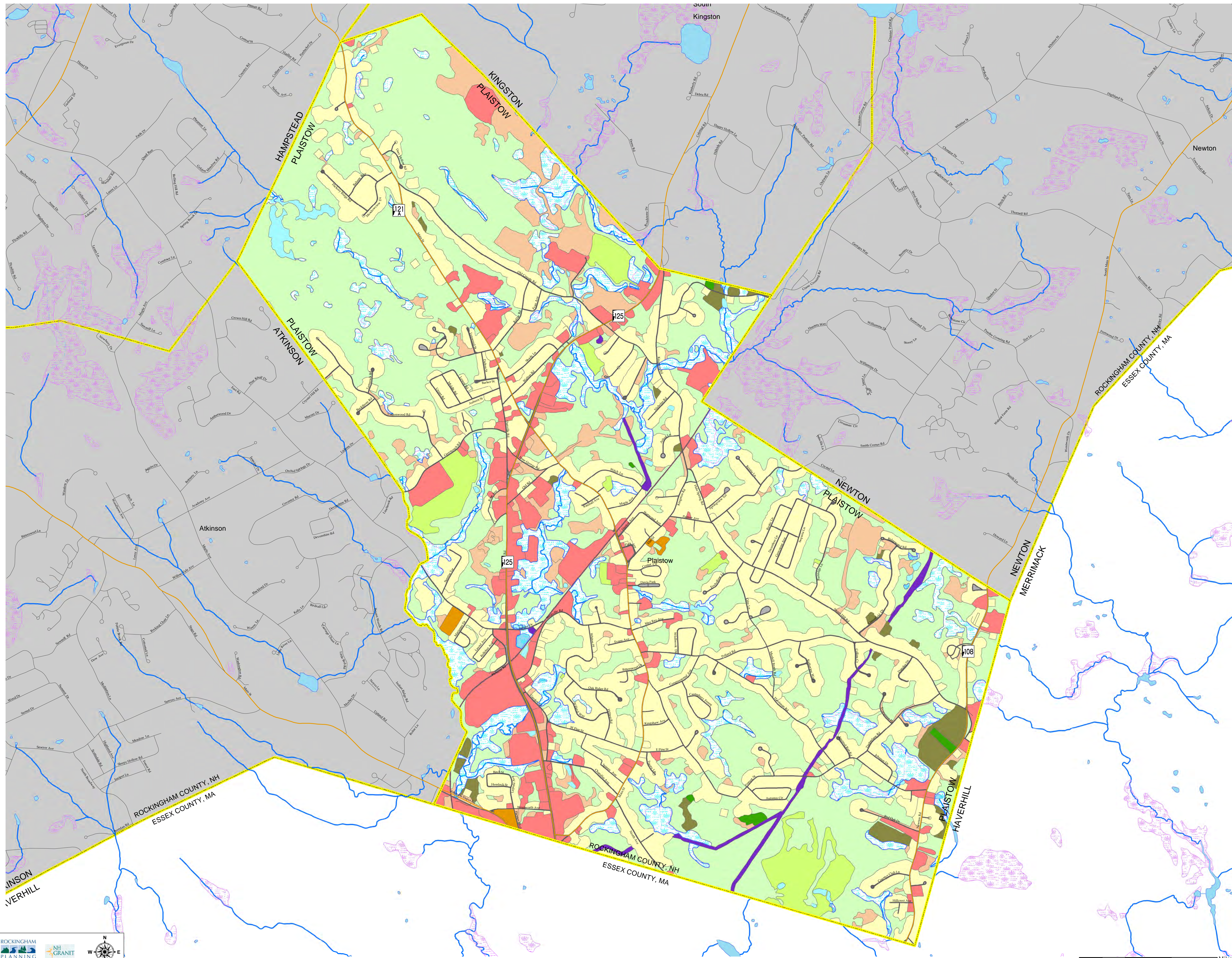


Map 1 2010 Land Use Plaistow, New Hampshire

Updated Jan. 2017



Land Use Type

- Active Agricultural
- Aux Transportation
- Farmsteads
- Forested
- Industrial/Commercial
- Mixed Urban
- Open Wetlands
- Other/Idle
- Playing fields / Recreation
- Railroad
- Residential
- Transportation
- Utilities
- Water

- | | | |
|--|---|---|
| Roads <ul style="list-style-type: none"> State Local Private Not Maintained | Political Boundaries <ul style="list-style-type: none"> Town Boundary | Surface Water Features <ul style="list-style-type: none"> Lake / Pond Stream Wetland |
|--|---|---|

The land use delineations were determined from aerial photos. The process has been completed for various years and was last updated based on 2010 air photos. The work was a combined effort of the Rockingham Planning Commission, NH GRANIT at UNH.

Base data (town boundaries, hydrography, roads, railroads and utility lines) are taken from the USGS Digital Line Graph data, 1:24,000, as archived in the GRANIT database at Complex Systems Research Center, Institute for the study of Earth, Oceans and Space, University of New Hampshire, Durham, NH; 1992-1999. Roads have been updated from work done by Rockingham Planning Commission and NH Department of Transportation. Partial updates have been completed through 2000.

Map 2 Past and Future Hazards Plaistow, New Hampshire

Updated Jan. 2017

Hazard Areas

- Dam Breach
- Flood
- Microburst
- Superfund
- Wildfire

Adopted FEMA Flood Hazard Areas

- 0.2 PCT ANNUAL CHANCE FLOOD HAZARD
- A
- AE
- AO
- VE
- X

Stratified-Drift Aquifers (Transmissivity)

- Less than 1000
- 1000 to 2000
- 2000 to 4000
- Greater than 4000

| Key | Location | Hazard |
|-----|--------------------------------|------------|
| A | Junkyard on Rt. 121A | Flood |
| B | Fran Avenue | Flood |
| C | Walton Rd. at Rt. 125 | Flood |
| D | Brentwood Road | Flood |
| E | Kingston Brook | Flood |
| F | Garden Road | Flood |
| G | Westville Road | Flood |
| H | Cifre Lane | Flood |
| I | Pollard Road | Flood |
| J | Smith Corner | Flood |
| K | Cifre Lane | Flood |
| L | Undersized Culvert Forrest St. | Flood |
| M | Historical Society | Dam Breach |
| N | Microburst | Microburst |
| O | Superfund | Superfund |
| P | Wildfire | Wildfire |

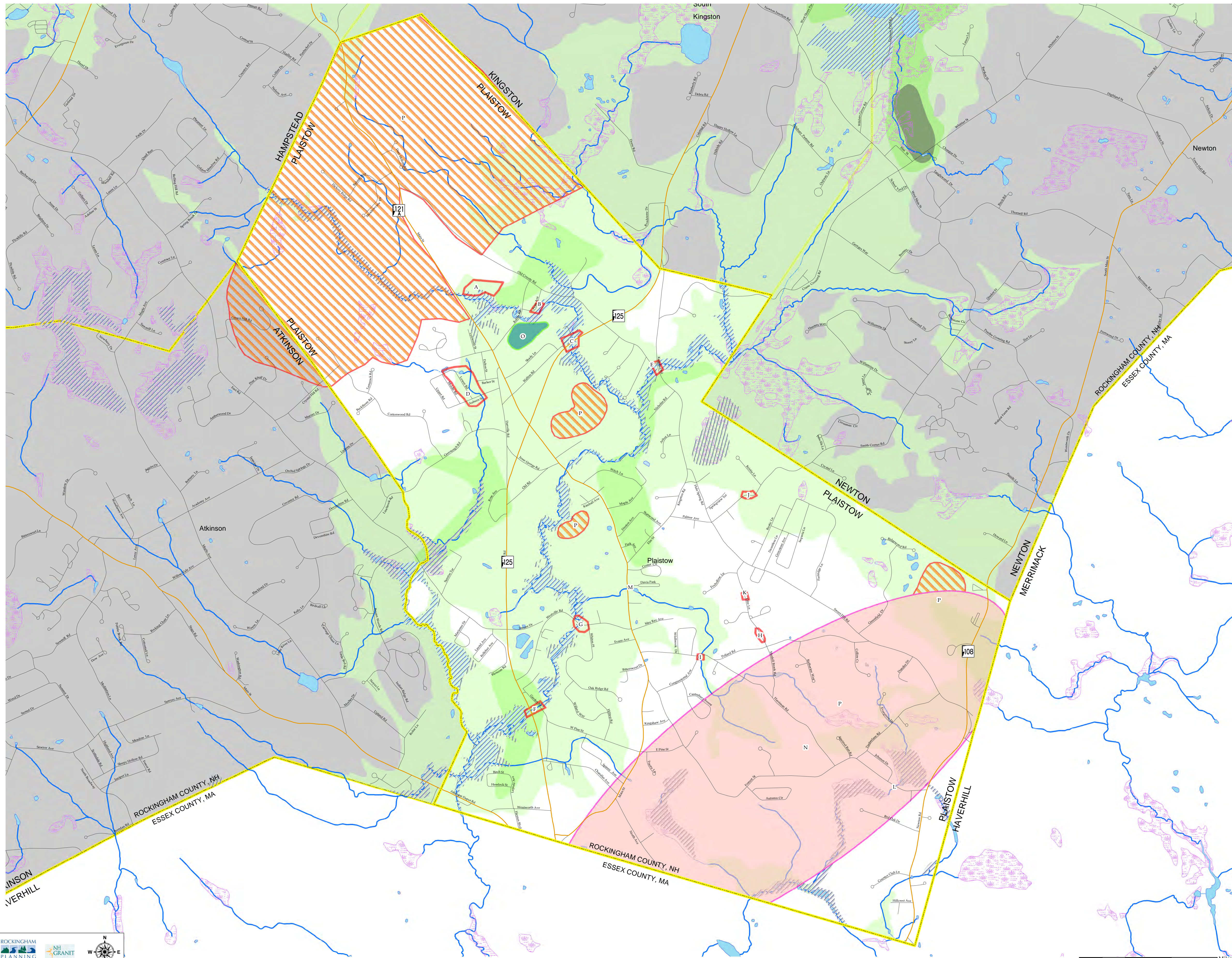
- | | | |
|----------------|-----------------------------|-------------------------------|
| Roads | Political Boundaries | Surface Water Features |
| State | Town Boundary | Lake / Pond |
| Local | | Stream |
| Private | | Wetland |
| Not Maintained | | |

Past and future hazards were identified by the Hazard Mitigation Planning Committee from the Town of Plaistow. Information was gathered to accompany the development of a Hazard Mitigation Plan under the guidance and funding of the NH Bureau of Emergency Management 2017.

FEMA Q3 Flood Data was created from the Federal Emergency Management Agency, National Flood Insurance Program, Q3 Flood Data DISC 23 (Maine, New Hampshire, Vermont). ARC/INFO Export files were retrieved from the CD cited above, imported into ARC/INFO, projected from geographic coordinates, NAD27 to NH State Plane feet, NAD83), processed to reconstruct topology, and written back out as Export files. Any documentation files for the data can be had from RPC, and do not reflect the processing noted above and performed by Complex Systems Research Center, UNH, December, 1997.

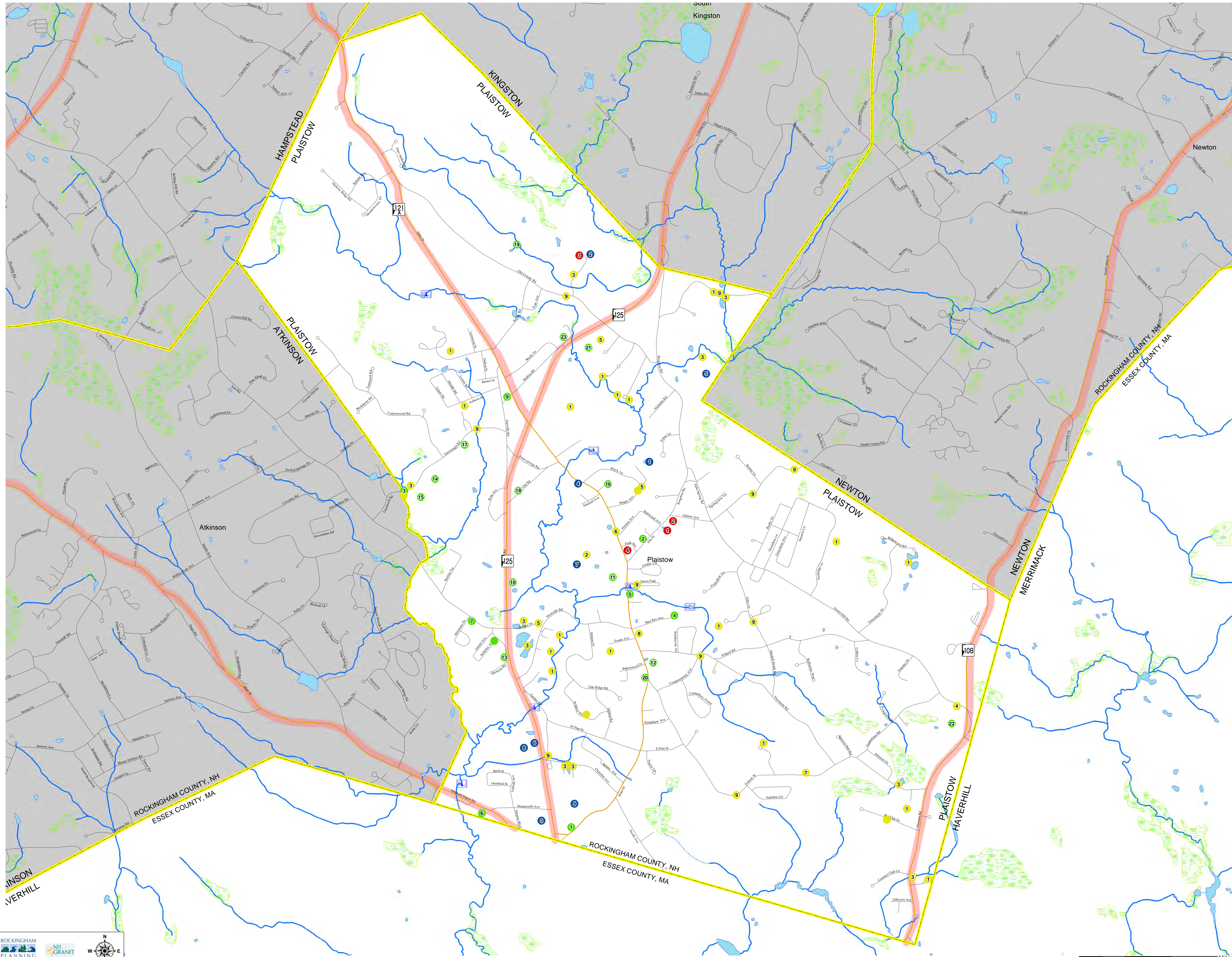
Transmissivity of Stratified Drift Aquifers quantifies the ability of an aquifer to transmit water, measured in feet squared per day. Transmissivity/Aquifer data was automated by Complex Systems Research Center, UNH and is archived in the GRANIT Database. The aquifer data was automated from maps generated as part of a larger study of groundwater resources in New Hampshire. The Study was conducted under a cooperative agreement between the US Geological Survey and the NH Department of Environmental Services, Water Resources Division. It included an assessment of the aquifers within stratified sand and gravel deposits.

Base data (town boundaries, hydrography, roads, railroads and utility lines) are taken from the USGS Digital Line Graph data, 1:24,000, as archived in the GRANIT database at Complex Systems Research Center, Institute for the study of Earth, Oceans and Space, University of New Hampshire, Durham, NH; 1992-1999. Roads supplied from NHDot 2017 Release.



Map 3 Critical Facilities Hazard Mitigation Plan Plaistow, New Hampshire

Updated Jan. 2017



| | | |
|---------------------------------------|---------------|--|
| ● | Red | Emergency Response Services |
| | 1 | Emergency Management |
| | 2 | Safety Complex |
| | 3 | Town Garage |
| | 4 | Town Hall |
| ● | Green | Facilities/Populations to Protect |
| | 1 | Little Wonders Learning Center |
| | 2 | District Court |
| | 3 | Dry Hydrant 15 |
| | 4 | Fish and Game Club |
| | 5 | Historical Society |
| | 6 | Holy Angels Preschool & Kindergarten |
| | 7 | Kimi Nichol's Center, Inc. |
| | 8 | Little Explorers |
| | 9 | Pine Park |
| | 10 | Plaistow Learning Center |
| | 11 | Pollard Elementary School |
| | 12 | Public Library |
| | 13 | Group Home |
| | 14 | Timberlane Reg High School |
| | 15 | Timberlane Reg Mdl School |
| | 16 | Town Recreation Area - Smith Field |
| | 17 | Vic Geary Drop In Center |
| | 18 | Wendy Moley |
| | 19 | Town Recreation Area - PARC |
| | 20 | Group Home |
| | 21 | Plaistow YMCA |
| | 22 | Rockingham Church |
| | 23 | Calvary Church - Rockingham |
| ● | Blue | Potential Resources |
| | 1 | Water Supply |
| | 2 | Dog Kennel |
| | 3 | Shaws |
| | 4 | American Legion |
| | 5 | Pro-Bark |
| | 6 | Plaistow Health |
| | 7 | Methuen Construction |
| | 8 | Market Basket |
| | 9 | Aldi's |
| ● | Yellow | Non Emergency Response Facilities |
| | 1 | Public Water Supply |
| | 2 | Cell Tower |
| | 3 | Dry Hydrant 11 |
| | 4 | Cistern |
| | 5 | Substation |
| | 6 | Power Substation |
| | 7 | RR/Road Intersection |
| | 8 | Natural Gas |
| | 9 | Verizon |
| | 9 | Culvert |

— Evacuation Routes — Dams — Bridges

Roads
 — State
 — Local
 — Private
 - - - Not Maintained

Political Boundaries
 — State
 — Local
 — Town Boundary

Surface Water Features
 — Lake / Pond
 — Stream
 — Wetland

Critical facilities, dams, bridges and evacuation routes were provided by the Town of Plaistow. NHDOT provided preliminary data for bridges and NHDES provided preliminary data for dams. Information was gathered to accompany the development of a Hazard Mitigation Plan under the guidance and funding of the NH Office of Emergency Management Jan. 2017.

Base data (town boundaries, hydrography and roads) are taken from the USGS Digital Line Graph data, 1:24,000, as archived in the GRANIT database at Complex Systems Research Center, Institute for the Study of Earth, Oceans and Space, University of New Hampshire, Durham, NH; 1992-1999. Roads are NHDOT 2017 release.