



*Plaistow Town Hall
145 Main Street
Plaistow, NH 03865*

Town of Plaistow, New Hampshire

OFFICE OF THE TOWN MANAGER

Mark A. Pearson J.D

*(603) 382-5200 Office
(603) 382-7183 Fax
Email: mpearson@Plaistow.com
Web: www.Plaistow.com*

REQUEST FOR PROPOSALS

ELECTRICAL WORK

December 18th, 2018

The Town of Plaistow is requesting proposals or estimates to perform the installation of Electrical Work on a new commercial Pre-Engineered Steel Garage Building also known as the "Plaistow Public Works" Building under construction at 144 Main Street.

This building is a one-story steel building with a four (4) foot concrete foundation above grade, metal walls and roof – clear span 80 x 100 (8000 square feet) with a 20 x 100 (2000 square feet) mezzanine above the office area. (The utility room, bathrooms and office area are located below the mezzanine area.) The open garage space is 60 x 100 feet or 6000 square feet.

Copies of this RFP and Preliminary Construction Drawings are available at the Office of the Town Manager located at 145 Main Street, Plaistow, NH 03865, Monday through Thursday 7:00 a.m. to 4:30 p.m. and Friday 7:00 a.m. to 11:00 a.m.

Questions may be directed to the Office of the Town Manager 603-382-5200 x261.

General Scope of Work:

The proposed construction inside the building will include the Rough and Finish Electrical work for:

- 400 Amp (3 Phase) Electrical Panel
- Exterior Meter Socket
- 2 – 200 Amp Sub-Panels
- Interior LED lighting for the 60 x 100 Garage Bays including multiple light switches
- Interior electrical outlets specific to the electric garage door openers

Note: The underground conduit and metal sweeps are the responsibility of the Town of Plaistow.

Please specify the proposed brand, model, design, size and specifications for the lights, electrical panels, switches and outlets. Please quote the number of items estimated to complete this work.

The proposed project work should commence shortly after the building is closed in to the weather on approximately January 1st, 2019

Completion Date:

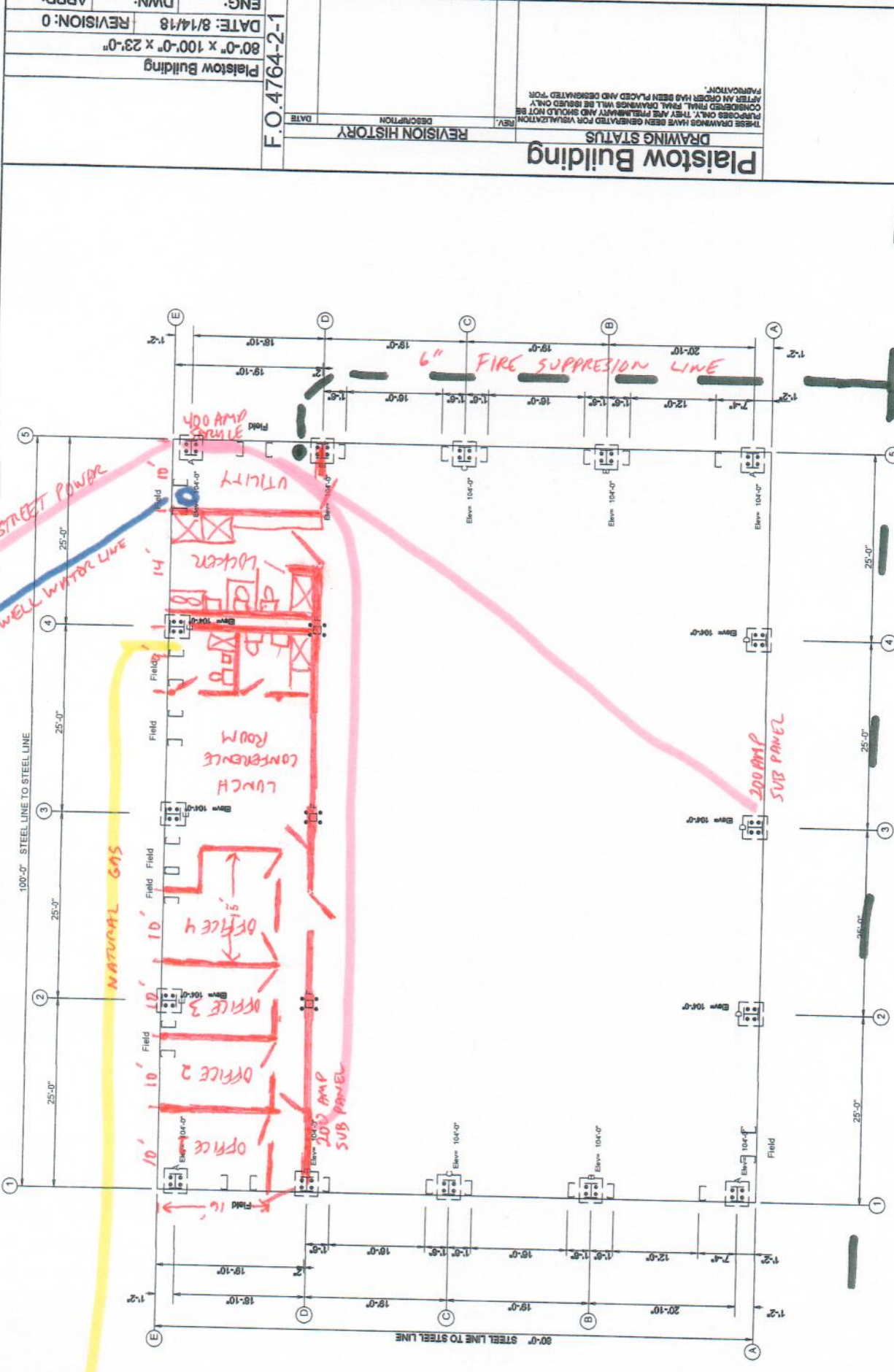
The successful vendor should complete the electrical work as soon as practicable to allow for power for the electric door openers, permanent overhead lighting in the garage bays and temporary lighting under the mezzanine during construction.

Submission Date:

All proposals must be submitted to the Town of Plaistow, Office of the Town Manager, 145 Main Street, Plaistow, NH 03865 by Noon on December 28th, 2018 in a sealed envelope clearly marked "**Plaistow DPW Garage Electrical Proposal**" on the outside of the "sealed" envelope. The Town of Plaistow reserves the right to waive any informalities or to accept or reject any or all proposals, as deemed to be in the best interest of the Town.

Preliminary Construction

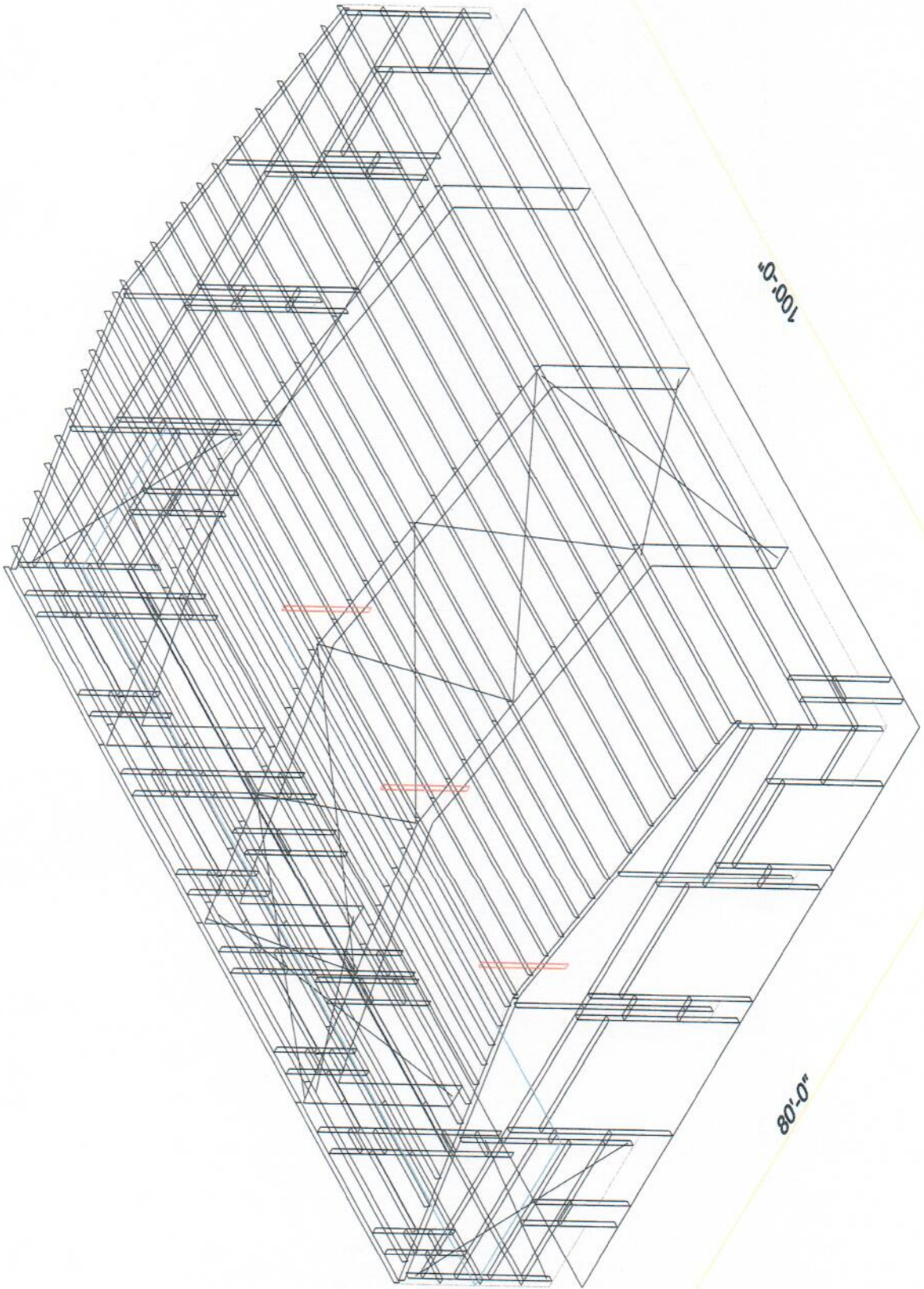
Drawings



12" FIRE SUPPRESSION LINE

ANCHOR BOLT PLAN
NOTE: All Base Plates @ 100'-0" (U.N.)
Finished Floor @ 100'-0"

Plastow Building	
REV.	DESCRIPTION
REVISION HISTORY	
THESE DRAWINGS HAVE BEEN GENERATED FOR VISUALIZATION PURPOSES ONLY. THEY ARE PRELIMINARY AND SHOULD NOT BE CONSIDERED FINAL. FINAL DRAWINGS WILL BE ISSUED ONLY AFTER AN ORDER HAS BEEN PLACED AND DESIGNATED FOR FABRICATION.	
DATE	
ENG: F.O.4764-2-1	
DATE: 8/14/18	
APPD: REVISION: 0	
Plastow Building	
80'-0" x 100'-0" x 23'-0"	



23'-0"

100'-0"

80'-0"

Plastow Building

DRAWING STATUS

REVISION HISTORY

REV. DATE DESCRIPTION

F.O.4764-2-1

Plastow Building
80'-0" x 100'-0" x 23'-0"
DATE: 8/14/18
REVISION: 0
DWN: APPD.

REVISION HISTORY

REV. DATE DESCRIPTION

F.O.4764-2-1

Plastow Building
80'-0" x 100'-0" x 23'-0"
DATE: 8/14/18
REVISION: 0
DWN: APPD.

REVISION HISTORY

REV. DATE DESCRIPTION

F.O.4764-2-1

Plastow Building
80'-0" x 100'-0" x 23'-0"
DATE: 8/14/18
REVISION: 0
DWN: APPD.

REVISION HISTORY

REV. DATE DESCRIPTION

F.O.4764-2-1

Plastow Building
80'-0" x 100'-0" x 23'-0"
DATE: 8/14/18
REVISION: 0
DWN: APPD.

REVISION HISTORY

REV. DATE DESCRIPTION

F.O.4764-2-1

Plastow Building
80'-0" x 100'-0" x 23'-0"
DATE: 8/14/18
REVISION: 0
DWN: APPD.

REVISION HISTORY

REV. DATE DESCRIPTION

F.O.4764-2-1

Plastow Building
80'-0" x 100'-0" x 23'-0"
DATE: 8/14/18
REVISION: 0
DWN: APPD.

REVISION HISTORY

REV. DATE DESCRIPTION

F.O.4764-2-1

Plastow Building
80'-0" x 100'-0" x 23'-0"
DATE: 8/14/18
REVISION: 0
DWN: APPD.

REVISION HISTORY

REV. DATE DESCRIPTION

F.O.4764-2-1

Plastow Building
80'-0" x 100'-0" x 23'-0"
DATE: 8/14/18
REVISION: 0
DWN: APPD.

REVISION HISTORY

REV. DATE DESCRIPTION

F.O.4764-2-1

Plastow Building
80'-0" x 100'-0" x 23'-0"
DATE: 8/14/18
REVISION: 0
DWN: APPD.

REVISION HISTORY

BOLT TABLE

FRAME LINE 1	LOCATION	QUAN	TYPE	DIA	LENGTH	QUAN	LENGTH
ER-1/ER-2		8	A325	1/2"	1 1/2"		
ER-2/ER-3		8	A325	1/2"	1 1/2"		
ER-3/ER-4		8	A325	1/2"	1 1/2"		
Columns/Raf		2	A325	3/4"	1 3/4"		

SUPPORT BEAM BOLT TABLE

FRAME LINE 1	TYPE	DIA	LENGTH	QUAN
1	A325	3/4"	1 3/4"	2

MEMBER TABLE

QUAN	MARK	PART	LENGTH
1	EC-1	WBX10	17'-1 3/4"
1	EC-2	WBX10	20'-3 7/16"
1	EC-3	WBX18	23'-5 7/16"
1	EC-4	WBX10	20'-7 7/16"
1	EC-5	WBX10	17'-1 3/4"
1	ER-1	W12X16	37'-8 3/8"
1	ER-2	W12X16	20'-10 1/4"
1	ER-3	W12X16	20'-1 1/16"
1	ER-4	W12X16	20'-5 9/16"
2	DJ-1	8X35C16	10'-10 3/8"
4	DJ-2	8X35C13	19'-9 3/4"
2	DJ-3	8X35C16	14'-0 3/4"
1	DH-1	8X35C16	3'-0"
2	DH-2	8X35C16	16'-0"
1	DH-3	8X35C16	12'-0"
3	G-1	8X25Z16	18'-5 1/2"
1	G-2	8X25Z16	18'-5 1/2"
5	G-3	8X25Z16	1'-0"
2	G-4	8X25Z13	18'-6 7/8"
4	G-5	8X25Z13	11 3/8"
1	G-6	8X25Z12	20'-5 1/2"
1	G-7	8X25Z14	20'-5 1/2"
1	G-8	8X25Z16	6'-10"
1	CB-1	CABLE500	24'-2 5/8"
1	CB-2	CABLE500	22'-1 1/4"
1	MB-1	W18X40	18'-7 1/4"
1	JB-1	8X35C16	4'-4 15/16"
1	JB-2	8X35C16	7'-0 15/16"
1	JB-3	8X35C16	7'-4 15/16"
1	JB-4	8X35C16	4'-8 15/16"
2	JB-5	8X35C16	5'-8 1/2"
1	JB-6	8X35C16	4'-2 15/16"
1	JB-7	8X35C16	2'-2 15/16"

CONNECTION PLATES

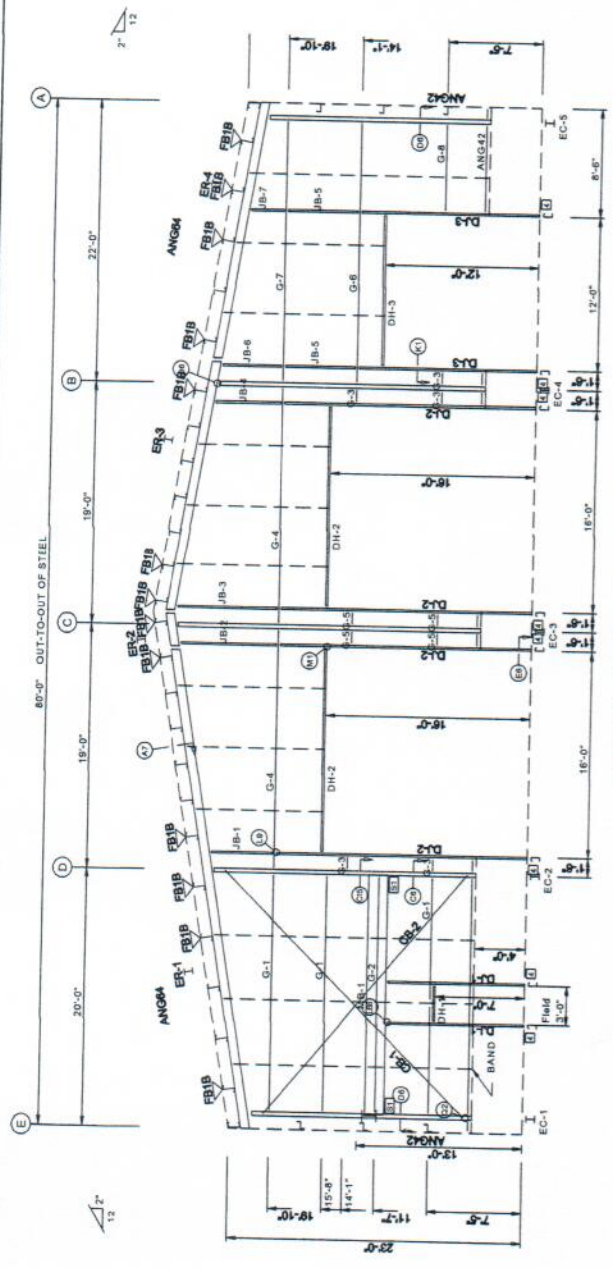
FRAME LINE 1	ID	QUAN	MARK/PART
4	8	11	

FLANGE BRACE TABLE

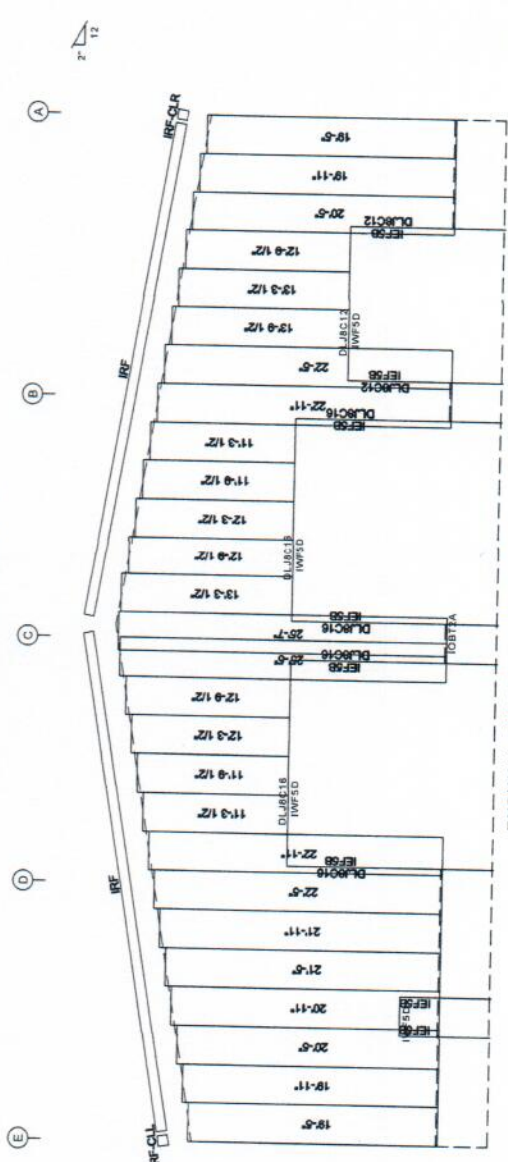
FRAME LINE 1	ID	MARK	LENGTH
1	FB1B		1'-7"

TRIM COLORS

- EAVE TRIM = TBD
- CORNER TRIM = TBD
- BASE TRIM = TBD
- DOOR TRIM = TBD
- RAKE TRIM = TBD
- LINER TRIM = TBD
- SOFFIT TRIM = Soffit panel color
- ONLY APPLICABLE IF LINER TRIM OR SOFFIT PANEL IS INDICATED ON BUILDING ORDER.



ENDWALL FRAMING: FRAME LINE 1



ENDWALL SHEETING & TRIM: FRAME LINE 1

GENERAL NOTES:

1. Use TEK5WW screws in place of SD150 panel screws at all 10 gage members.
2. See detail C7A for field coping of coldform endwall column flange braces.
3. All connections to door or window jambs where the clip is not designated in the clip table / drawing are made with JC# clips (#= Girt Depth).

THESE DRAWINGS HAVE BEEN GENERATED FOR VISUALIZATION ONLY. THEY ARE PRELIMINARY AND SHOULD NOT BE CONSIDERED FINAL. FINAL DRAWINGS WILL BE ISSUED ON FABRICATION. AFTER AN ORDER HAS BEEN PLACED AND DESIGNATED FOR

Plastow Building

DRAWING STATUS
REVISION HISTORY

F.O.4764-2-1
DATE: 8/14/18
REVISION: 0
Plastow Building
80'-0" x 100'-0" x 23'-0"
APPD: DWN: ENG:

THESE DRAWINGS HAVE BEEN GENERALLY FOR VISUALIZATION PURPOSES ONLY. THEIR USE FOR CONSTRUCTION SHALL BE AT THE USER'S RISK. THESE DRAWINGS HAVE BEEN PLACED AND DESIGNATED FOR FABRICATION.

REV.	DESCRIPTION	DATE

BOLT TABLE
FRAME LINE 5

LOCATION	QUAN	TYPE	DIA	LENGTH	QUAN
ER-5/ER-6	8	A325	1/2"	1 1/2"	2
ER-6/ER-7	8	A325	1/2"	1 1/2"	2
ER-7/ER-8	8	A325	1/2"	1 1/2"	2
Columns/Raft	2	A325	3/4"	1 3/4"	2

SUPPORT BEAM BOLT TABLE
FRAME LINE 5

ID	QUAN	TYPE	DIA	LENGTH	QUAN
1	3	A325	3/4"	1 3/4"	2

MEMBER TABLE
FRAME LINE 5

QUAN	MARK	PART	LENGTH
1	EC-3	WBX18	23'-5 7/16"
1	EC-4	WBX10	20'-7 7/16"
1	EC-5	WBX10	17'-1 3/4"
1	EC-7	WBX10	20'-3 7/16"
1	EC-8	WBX10	17'-1 3/4"
1	ER-5	W12X16	20'-5 9/16"
1	ER-6	W12X16	20'-1 1/16"
1	ER-7	W12X16	2'-10 1/4"
1	ER-8	W12X16	37'-8 3/8"
2	DJ-1	8X35C16	10'-10 3/8"
4	DJ-2	8X35C13	19'-8 3/4"
2	DJ-3	8X35C16	14'-0 3/4"
1	DH-1	8X35C16	16'-0"
2	DH-2	8X35C16	12'-0"
1	DH-3	8X35C16	18'-5 1/2"
3	G-1	8X25Z13	18'-5 1/2"
5	G-2	8X25Z13	1'-0"
5	G-3	8X25Z13	1'-0"
4	G-4	8X25Z13	18'-6 7/8"
2	G-5	8X25Z12	11 3/8"
1	G-6	8X25Z12	20'-5 1/2"
1	G-7	8X25Z14	20'-5 1/2"
1	G-8	8X25Z16	6'-10"
1	CB-1	CABLE500	24'-2 5/8"
1	CB-2	CABLE500	22'-1 1/4"
1	MB-1	W18X40	18'-7 1/4"
1	JB-1	8X35C16	4'-4 15/16"
1	JB-2	8X35C16	7'-0 15/16"
1	JB-3	8X35C16	7'-4 15/16"
1	JB-4	8X35C16	4'-8 15/16"
2	JB-5	8X35C16	5'-8 1/2"
1	JB-6	8X35C16	4'-2 15/16"
1	JB-7	8X35C16	2'-2 15/16"

CONNECTION PLATES
FRAME LINE 5

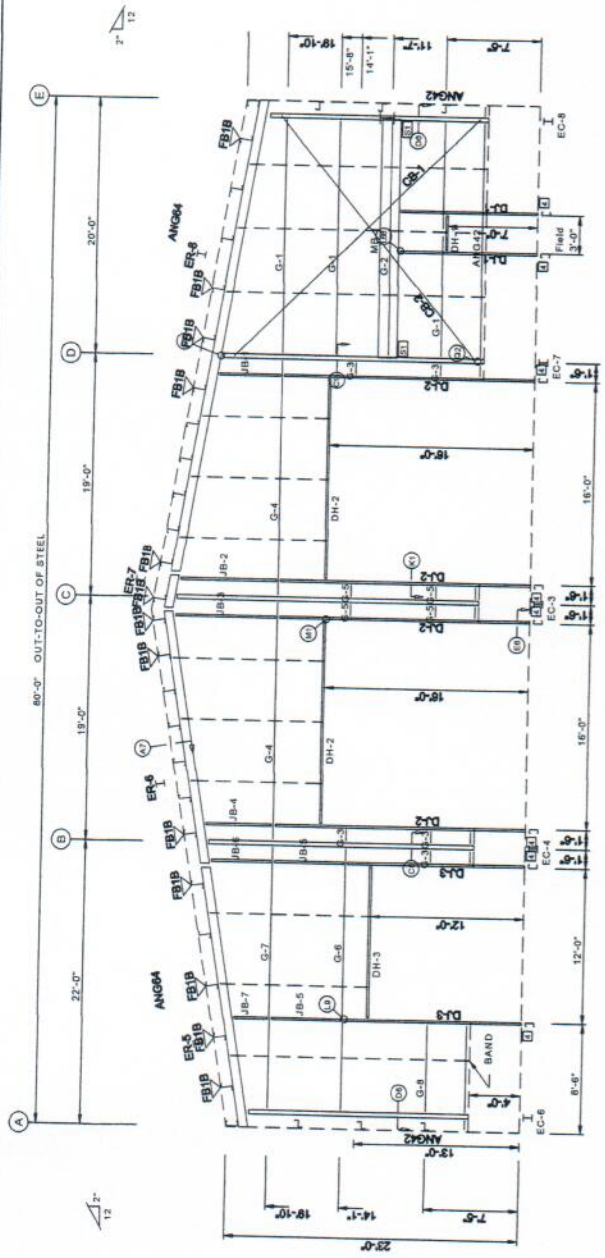
ID	QUAN	MARK/PART
4	8	11

FLANGE BRACE TABLE
FRAME LINE 5

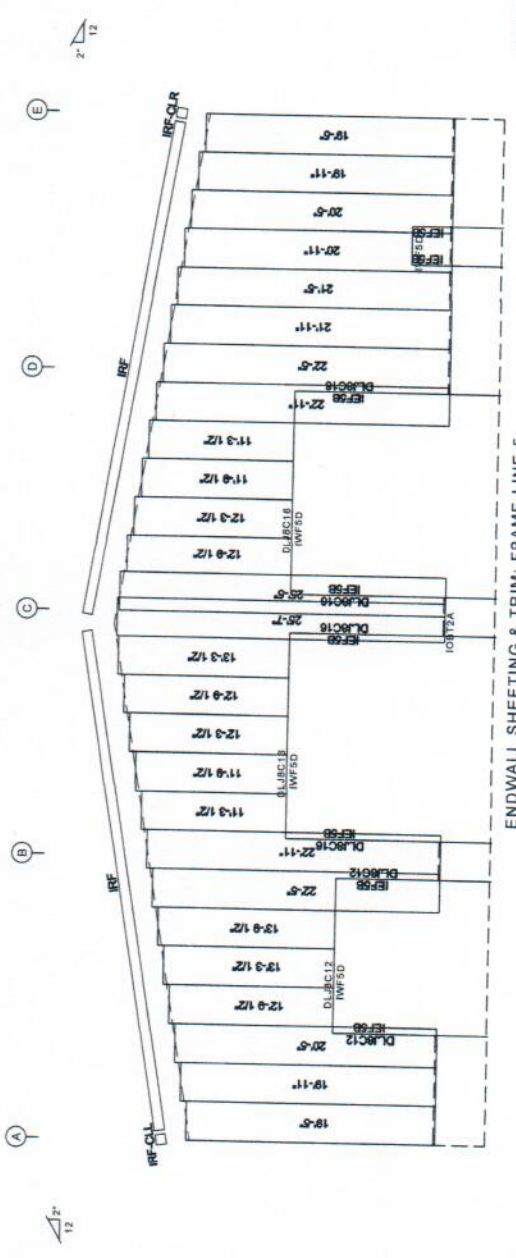
ID	MARK	LENGTH
1	FB1B	1'-7"

TRIM COLORS

EAVER TRIM = TBD
BASE TRIM = TBD
DOOR TRIM = TBD
RAKE TRIM = TBD
LINER TRIM = TBD
SOFFIT TRIM = Soffit panel color
* ONLY APPLICABLE IF LINER TRIM OR SOFFIT PANEL IS INDICATED IN BUILDING ORDER.



ENDWALL FRAMING: FRAME LINE 5



ENDWALL SHEETING & TRIM: FRAME LINE 5

GENERAL NOTES:

1. Use TEK500 screws in place of SD150 panel screws at all 10 gage members.
2. See detail C7A for field coping of coldform endwall column flange braces.
3. All connections to door or window jambs where the clip is not designated in the clip table / drawing are made with JC# clips. (#= Girt Depth).

