



*Plaistow Town Hall
145 Main Street
Plaistow, NH 03865*

Town of Plaistow, New Hampshire

OFFICE OF THE TOWN MANAGER

Mark A. Pearson J.D

*(603) 382-5200 Office
(603) 382-7183 Fax
Email: mpearson@Plaistow.com
Web: www.Plaistow.com*

REQUEST FOR PROPOSALS

FIRE SUPPRESSION SYSTEM WORK

December 18th, 2018

The Town of Plaistow is requesting proposals or estimates to perform the installation of Fire Suppression Work on a new commercial Pre-Engineered Steel Garage Building also known as the "Plaistow Public Works" Building under construction at 144 Main Street.

This building is a one-story steel building with a four (4) foot concrete foundation above grade, metal walls and roof – clear span 80 x 100 (8000 square feet) with a 20 x 100 (2000 square feet) mezzanine above the office area. (The utility room, bathrooms and office area are located below the mezzanine area.) The open garage space is 60 x 100 feet or 6000 square feet.

Copies of this RFP and Preliminary Construction Drawings are available at the Office of the Town Manager located at 145 Main Street, Plaistow, NH 03865, Monday through Thursday 7:00 a.m. to 4:30 p.m. and Friday 7:00 a.m. to 11:00 a.m.

Questions may be directed to the Office of the Town Manager 603-382-5200 x261.

General Scope of Work:

The proposed construction inside the building will include the Fire Suppression installation of piping, sprinklers, fire alarm panel and outside fire department connection for:

- The Garage Bays (60 x 100)
- The Mezzanine (20 x 100)
- The Office Area (20 x 100)

Please specify the proposed brand, model, design, size and specifications for the piping, sprinkler heads, fire alarm panel and outside fire department connections for an anticipated pressure of 70 – 85 psi. Please quote the number of items estimated to complete this work.

The design of the system is for connection to the proposed municipal potable water system in 2020. The 6" connection the current water system is within the building walls and located in the utility room.

The proposed project work should commence shortly after the building is closed in to the weather on approximately January 1st, 2019

Completion Date:

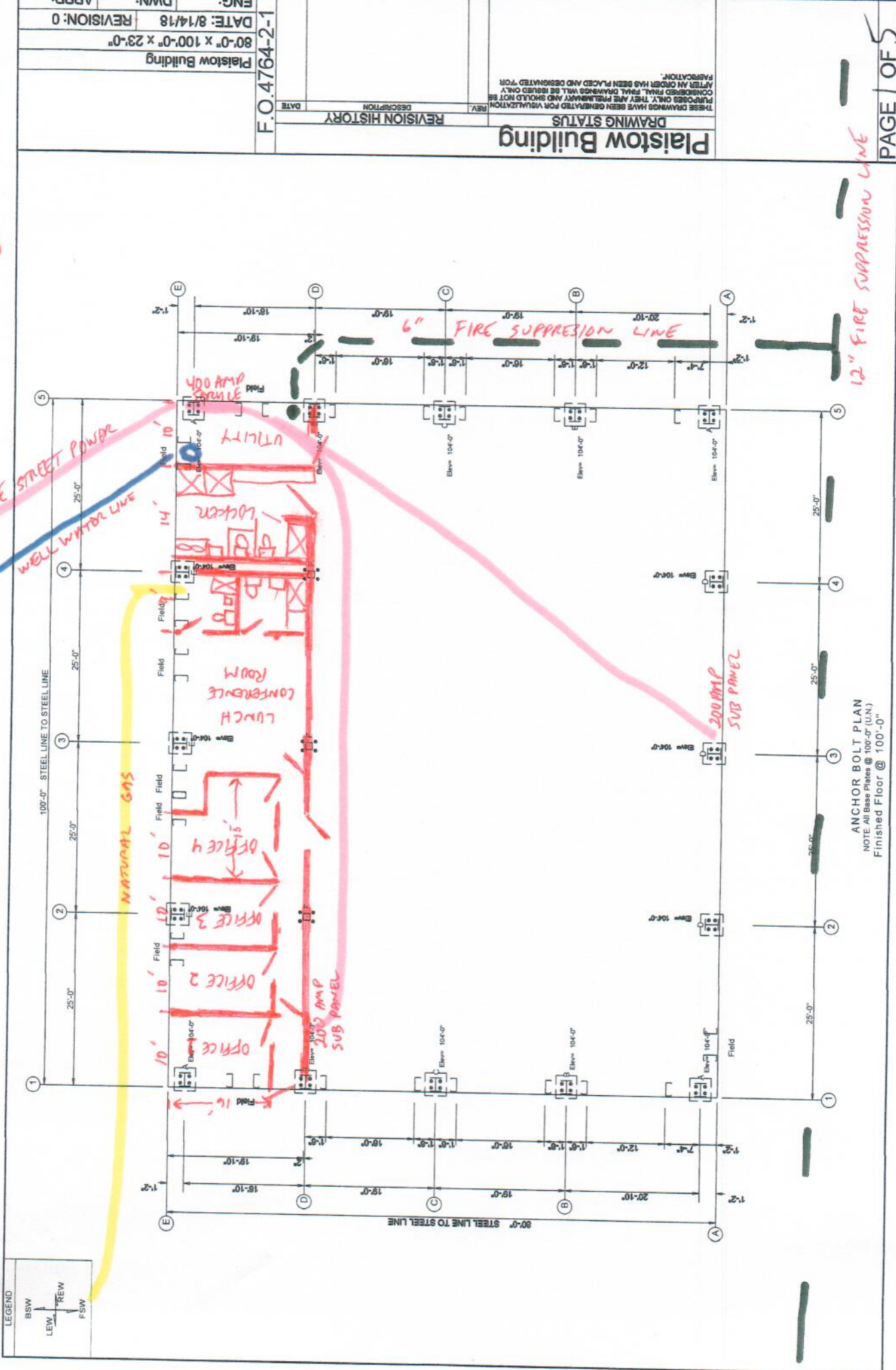
The successful vendor should complete the Fire Suppression System as soon as practicable to allow for installation of the sprinkler heads in the garage bays, the office areas and the fire alarm panel.

Submission Date:

All proposals must be submitted to the Town of Plaistow, Office of the Town Manager, 145 Main Street, Plaistow, NH 03865 by Noon on December 28th, 2018 in a sealed envelope clearly marked **"Plaistow DPW Fire Suppression System Proposal"** on the outside of the "sealed" envelope. The Town of Plaistow reserves the right to waive any informalities or to accept or reject any or all proposals, as deemed to be in the best interest of the Town.

Preliminary Construction

Drawings



LEGEND

BSW	REW
LEW	FSW

ANCHOR BOLT PLAN
 NOTE: All Base Plates @ 100'-0" (U.N.)
 Finished Floor @ 100'-0"

Plastow Building

REV.	DESCRIPTION	DATE
DRAWING STATUS		
REVISION HISTORY		

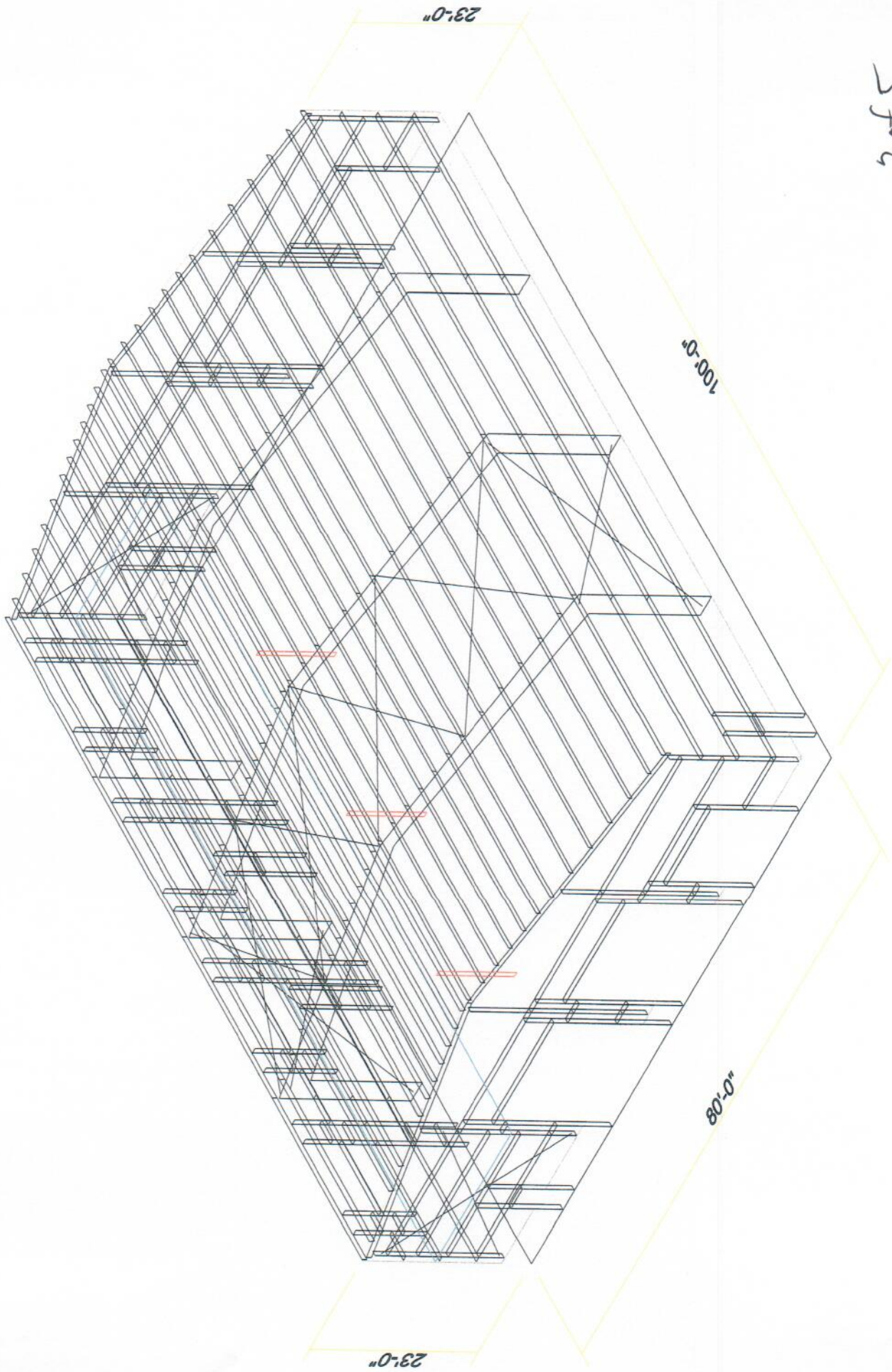
THESE DRAWINGS HAVE BEEN GENERATED FOR VENTILATION PURPOSES ONLY. THEY ARE PRELIMINARY AND SHOULD NOT BE CONSIDERED FINAL DRAWINGS WILL BE ISSUED ONLY AFTER AN ORDER HAS BEEN PLACED AND DESIGNATED FABRICATION.

Plastow Building

80'-0" x 100'-0" x 23'-0"
DATE: 8/14/18
REVISION: 0
APPD:
ENG:

F.O.4764-2-1

5 of 2



PLASTOW BUILDING
 DRAWING STATUS
 REVISION HISTORY

REV.	DESCRIPTION	DATE

F.O. 4764-2-1
 DATE: 8/14/18
 REVISION: 0
 DWN: ENG: APPD: 80'-0" x 100'-0" x 23'-0"
 Plastow Building

BOLT TABLE

FRAME LINE	LOCATION	QUAN	TYPE	DIA	LENGTH
ER-1/ER-2	Columns/Raf	8	A325	1/2"	1 1/2"
ER-2/ER-3	Columns/Raf	8	A325	1/2"	1 1/2"
ER-3/ER-4	Columns/Raf	8	A325	1/2"	1 1/2"
Columns/Raf	Columns/Raf	2	A325	3/4"	1 3/4"

SUPPORT BEAM BOLT TABLE

FRAME LINE	QUAN	TYPE	DIA	LENGTH	QUAN
1	3	A325	3/4"	1 3/4"	2

MEMBER TABLE

MEMBER	MARK	PART	LENGTH
1	EC-1	WBX10	17'-1 3/4"
1	EC-2	WBX10	20'-3 7/16"
1	EC-3	WBX18	23'-5 7/16"
1	EC-4	WBX10	20'-7 7/16"
1	EC-5	WBX10	17'-1 3/4"
1	ER-1	W12X16	37'-8 3/8"
1	ER-2	W12X16	2'-10 1/4"
1	ER-3	W12X16	20'-1 1/16"
1	ER-4	W12X16	20'-5 9/16"
2	DJ-1	8X35C16	10'-10 3/8"
2	DJ-2	8X35C16	19'-9 3/4"
2	DJ-3	8X35C16	14'-0 3/4"
2	DH-1	8X35C16	16'-0"
1	DH-2	8X35C16	12'-0"
1	DH-3	8X35C16	18'-5 1/2"
3	G-1	8X25Z16	18'-5 1/2"
1	G-2	8X25Z13	1'-0"
5	G-3	8X25Z16	1'-0"
2	G-4	8X25Z13	18'-6 7/8"
4	G-5	8X25Z16	11 3/8"
1	G-6	8X25Z12	20'-5 1/2"
1	G-7	8X25Z14	20'-5 1/2"
1	G-8	8X25Z16	6'-10"
1	CB-1	CABLE500	24'-2 5/8"
1	CB-2	CABLE500	22'-1 1/4"
1	MB-1	W18X40	18'-7 1/4"
1	JB-1	8X35C16	4'-4 15/16"
1	JB-2	8X35C16	7'-0 15/16"
1	JB-3	8X35C16	7'-4 15/16"
1	JB-4	8X35C16	4'-8 15/16"
2	JB-5	8X35C16	5'-8 15/16"
1	JB-6	8X35C16	4'-2 15/16"
1	JB-7	8X35C16	2'-2 15/16"

CONNECTION PLATES

FRAME LINE	QUAN	MARK/PART
4	8	11

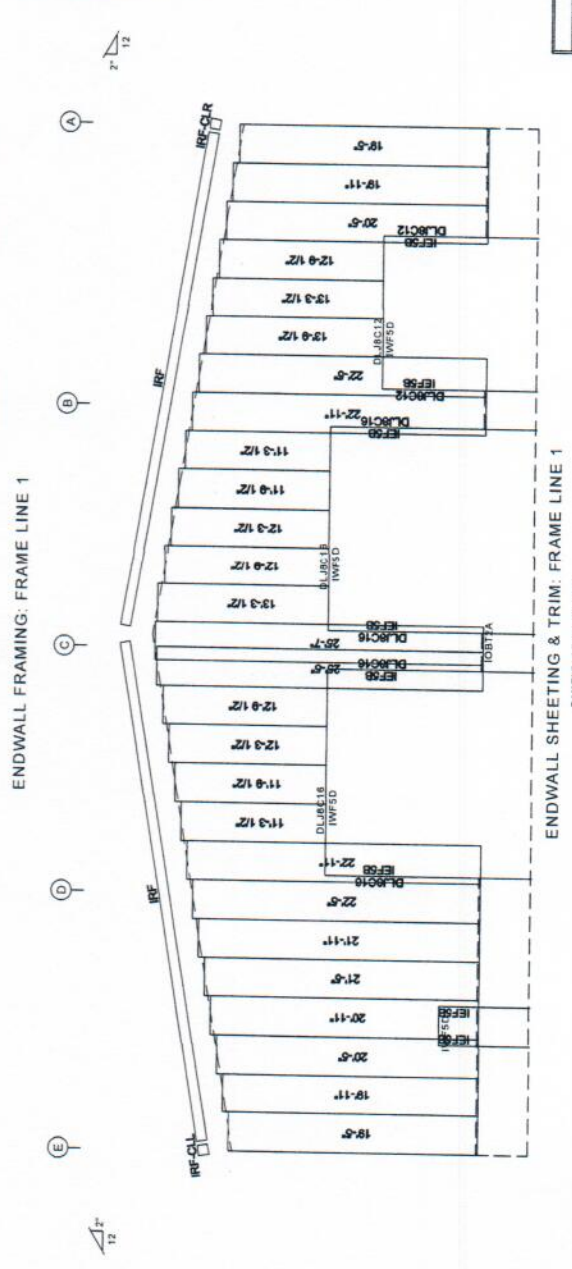
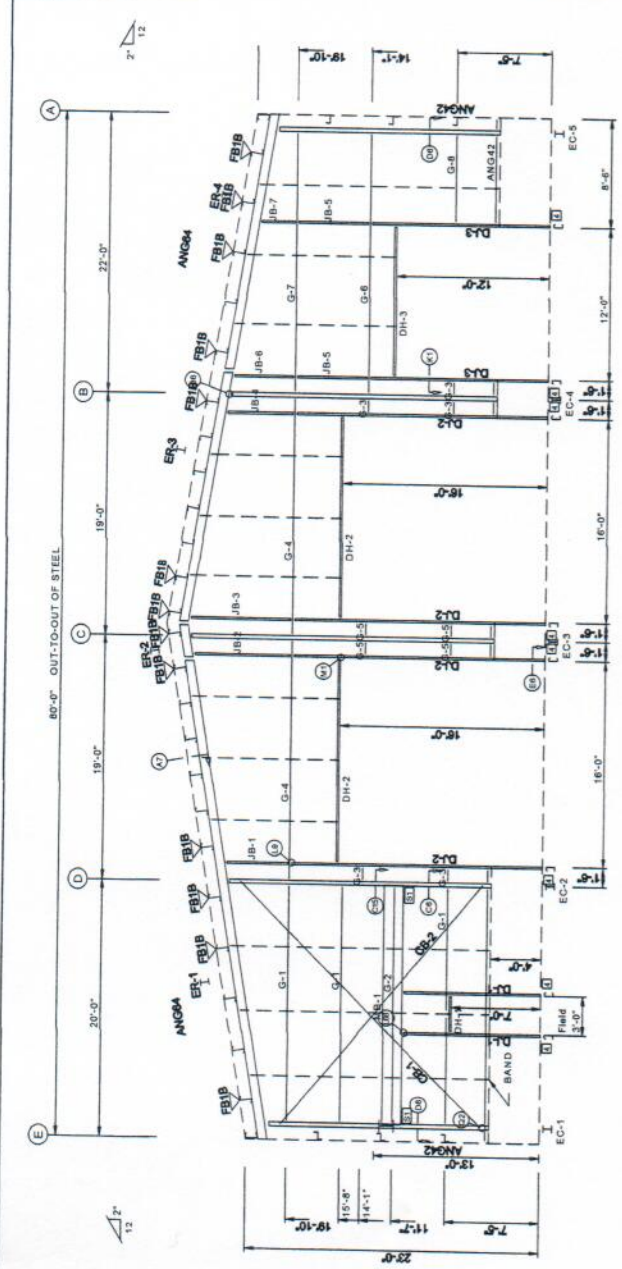
FLANGE BRACE TABLE

FRAME LINE	MARK	LENGTH
1	1	1-7

TRIM COLORS

EAVE TRIM	= TBD
CORNER TRIM	= TBD
GUTTER	=
DOWNSPOUTS	=
BASE TRIM	= TBD
DOOR TRIM	= TBD
RAKE TRIM	= TBD
LINER TRIM	= Liner panel color
SOFFIT TRIM	= Soffit panel color

* ONLY APPLICABLE IF LINER TRIM OR SOFFIT PANEL IS INDICATED ON BUILDING ORDER.



GENERAL NOTES:

1. Use TEK500 screws in place of SD150 panel screws at all 10 gage members.
2. See detail C7A for field coping of coldform endwall column flange braces.
3. All connections to door or window jambs where the clip is not designated in the clip table / drawing are made with 'JC' clips. (#= Girt Depth).

PLASTOW BUILDING
 DRAWING STATUS
 REVISION HISTORY

DATE: 8/14/18
 REVISION: 0
 DWN: 80'-0" x 100'-0" x 23'-0"
 Plastow Building

F.O. 4764-2-1

TRIM COLORS

EAVE TRIM	= TBD
CORNER TRIM	= TBD
GUTTER	=
DOWNSPOUTS	=
BASE TRIM	= TBD
DOOR TRIM	= TBD
RAKE TRIM	= TBD
LINER TRIM	= Liner panel color
SOFFIT TRIM	= Soffit panel color

* ONLY APPR. CABLE IF LINER TRIM OR SOFFIT PANEL IS INDICATED ON BUILDING ORDER.

CONNECTION PLATES

FRAME LINE 5	ID	QUAN	MARK/PART
	4	8	11

FLANGE BRACE TABLE

FRAME LINE 5	ID	MARK	LENGTH
	1	FB1B	1'-7"

MEMBER TABLE

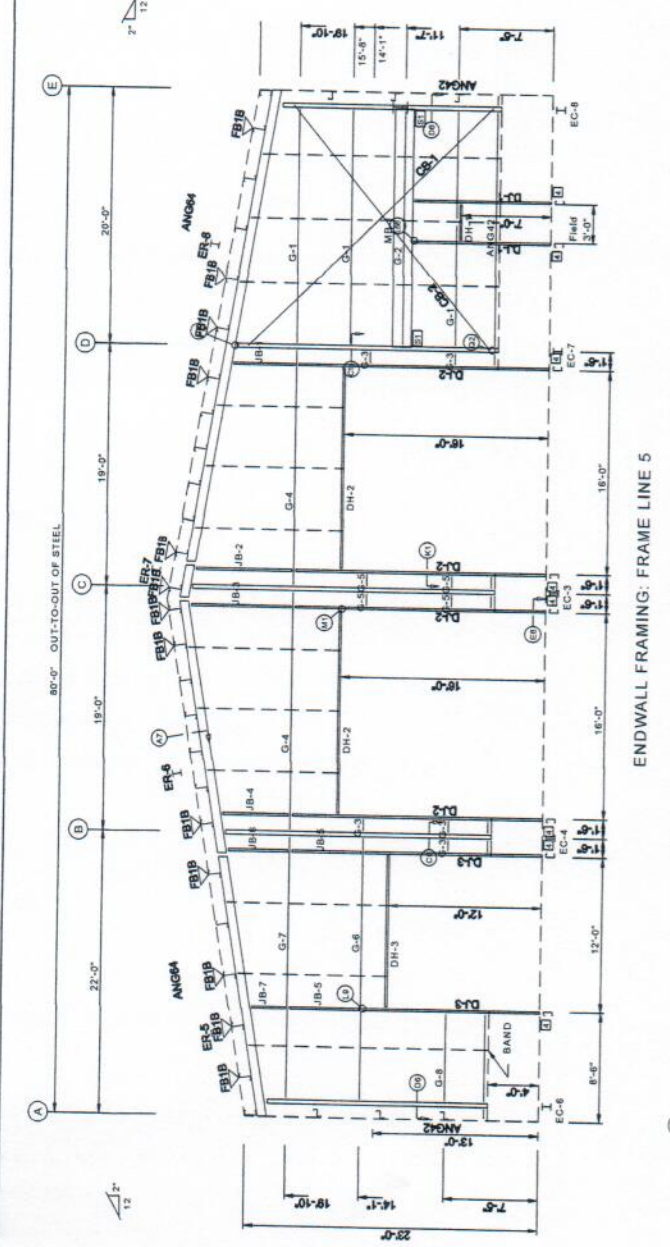
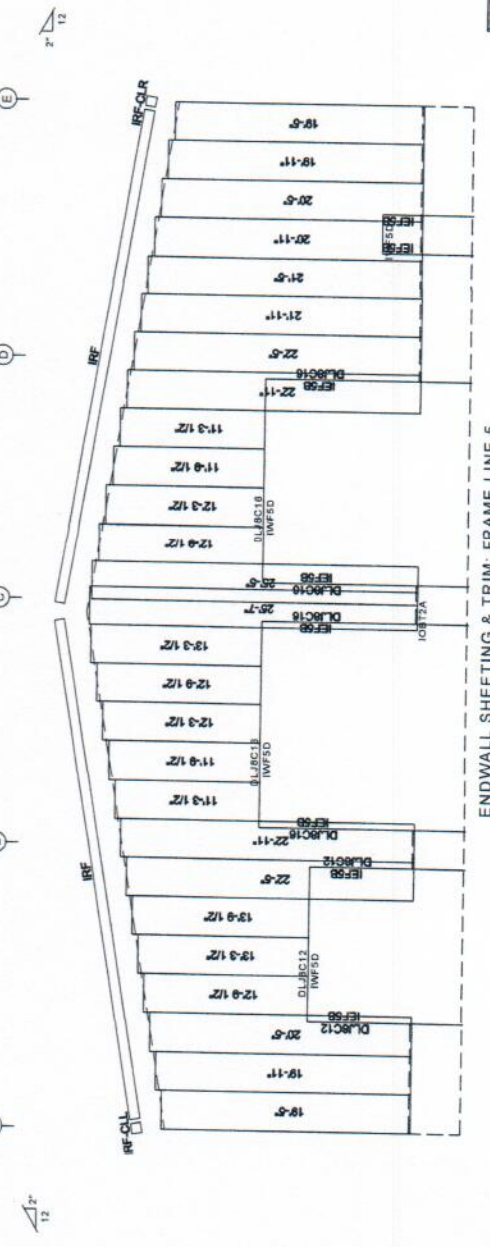
MEMBER	QUAN	MARK	PART	LENGTH
EC-3	1	W8X18		23'-5 7/16"
EC-4	1	W8X10		20'-7 7/16"
EC-6	1	W8X10		17'-1 3/4"
EC-7	1	W8X10		20'-3 7/16"
EC-8	1	W8X10		17'-1 3/4"
ER-5	1	W12X16		20'-5 9/16"
ER-6	1	W12X16		20'-1 1/16"
ER-7	1	W12X16		2'-10 1/4"
ER-8	1	W12X16		37'-8 3/8"
DH-1	2	8X35C16		10'-10 3/8"
DH-2	2	8X35C16		19'-9 3/4"
DH-3	2	8X35C16		14'-0 3/4"
DH-4	2	8X35C16		16'-0"
DH-5	1	8X35C16		12'-0"
G-1	3	8X25Z13		18'-5 1/2"
G-2	1	8X25Z13		1'-0"
G-3	5	8X25Z13		18'-6 7/8"
G-4	2	8X25Z13		11 3/8"
G-5	4	8X25Z12		20'-5 1/2"
G-6	1	8X25Z14		20'-5 1/2"
G-7	1	8X25Z16		6'-10"
G-8	1	8X25Z16		24'-2 5/8"
CB-1	1	CABLE500		22'-1 1/4"
CB-2	1	CABLE500		18'-7 1/4"
JB-1	1	8X35C16		4'-4 15/16"
JB-2	1	8X35C16		7'-0 15/16"
JB-3	1	8X35C16		7'-4 15/16"
JB-4	1	8X35C16		4'-8 15/16"
JB-5	2	8X35C16		5'-8 1/2"
JB-6	1	8X35C16		4'-2 15/16"
JB-7	1	8X35C16		2'-2 15/16"

SUPPORT BEAM BOLT TABLE

FRAME LINE 5	ID	QUAN	TYPE	DIA	LENGTH	QUAN
	3		A325	3/4"	1 3/4"	2

BOLT TABLE

FRAME LINE 5	LOCATION	QUAN	TYPE	DIA	LENGTH
ER-5/ER-6		8	A325	1/2"	1 1/2"
ER-6/ER-7		8	A325	1/2"	1 1/2"
ER-7/ER-8		8	A325	1/2"	1 1/2"
Columns/Raft		2	A325	3/4"	1 3/4"



GENERAL NOTES:

1. Use TEK55W screws in place of SD150 panel screws at all 10 gage members.
2. See detail C7A for field coping of coldform endwall column flange braces.
3. All connections to door or window jambs where the clip is not designated in the clip table / drawing are made with JC# clips (#= Girt Depth).

THESE DRAWINGS HAVE BEEN GENERATED FOR VISUALIZATION PURPOSES ONLY. FABRICATION AFTER AN ORDER HAS BEEN PLACED AND DESIGNED FOR CONSIDERED FINAL. TRIM DRAWINGS WILL BE ISSUED ONLY.

