



*Plaistow Town Hall  
145 Main Street  
Plaistow, NH 03865*

# **Town of Plaistow, New Hampshire**

## **OFFICE OF THE TOWN MANAGER**

**Mark A. Pearson J.D**

*(603) 382-5200 Office  
(603) 382-7183 Fax  
Email: [mpearson@Plaistow.com](mailto:mpearson@Plaistow.com)  
Web: [www.Plaistow.com](http://www.Plaistow.com)*

## **REQUEST FOR PROPOSALS**

### **GAS PIPE/PLUMBING WORK**

December 18<sup>th</sup>, 2018

The Town of Plaistow is requesting proposals or estimates to perform the installation of Gas Pipe/Plumbing Work on a new commercial Pre-Engineered Steel Garage Building also known as the "Plaistow Public Works" Building under construction at 144 Main Street.

This building is a one-story steel building with a four (4) foot concrete foundation above grade, metal walls and roof – clear span 80 x 100 (8000 square feet) with a 20 x 100 (2000 square feet) mezzanine above the office area. (The utility room, bathrooms and office area are located below the mezzanine area.) The open garage space is 60 x 100 feet or 6000 square feet.

Copies of this RFP and Preliminary Construction Drawings are available at the Office of the Town Manager located at 145 Main Street, Plaistow, NH 03865, Monday through Thursday 7:00 a.m. to 4:30 p.m. and Friday 7:00 a.m. to 11:00 a.m.

Questions may be directed to the Office of the Town Manager 603-382-5200 x261.

#### **General Scope of Work:**

The proposed construction inside the building will include the Rough and Finish Gas Pipe/Plumbing work for:

- A natural gas hot water heater
- Natural Gas Radiant Tube Ceiling Heaters

Please specify the proposed brand, model, design, size and specifications for the hot water heater and radiant tube heaters. Please quote the number of items estimated to complete this work.

The proposed project work should commence shortly after the building is closed in to the weather on approximately January 1<sup>st</sup>, 2019

**Completion Date:**

The successful vendor should complete the Rough and Finish Gas Pipe/Plumbing as soon as practicable to allow for installation of the ceiling heaters in the garage bays.

**Submission Date:**

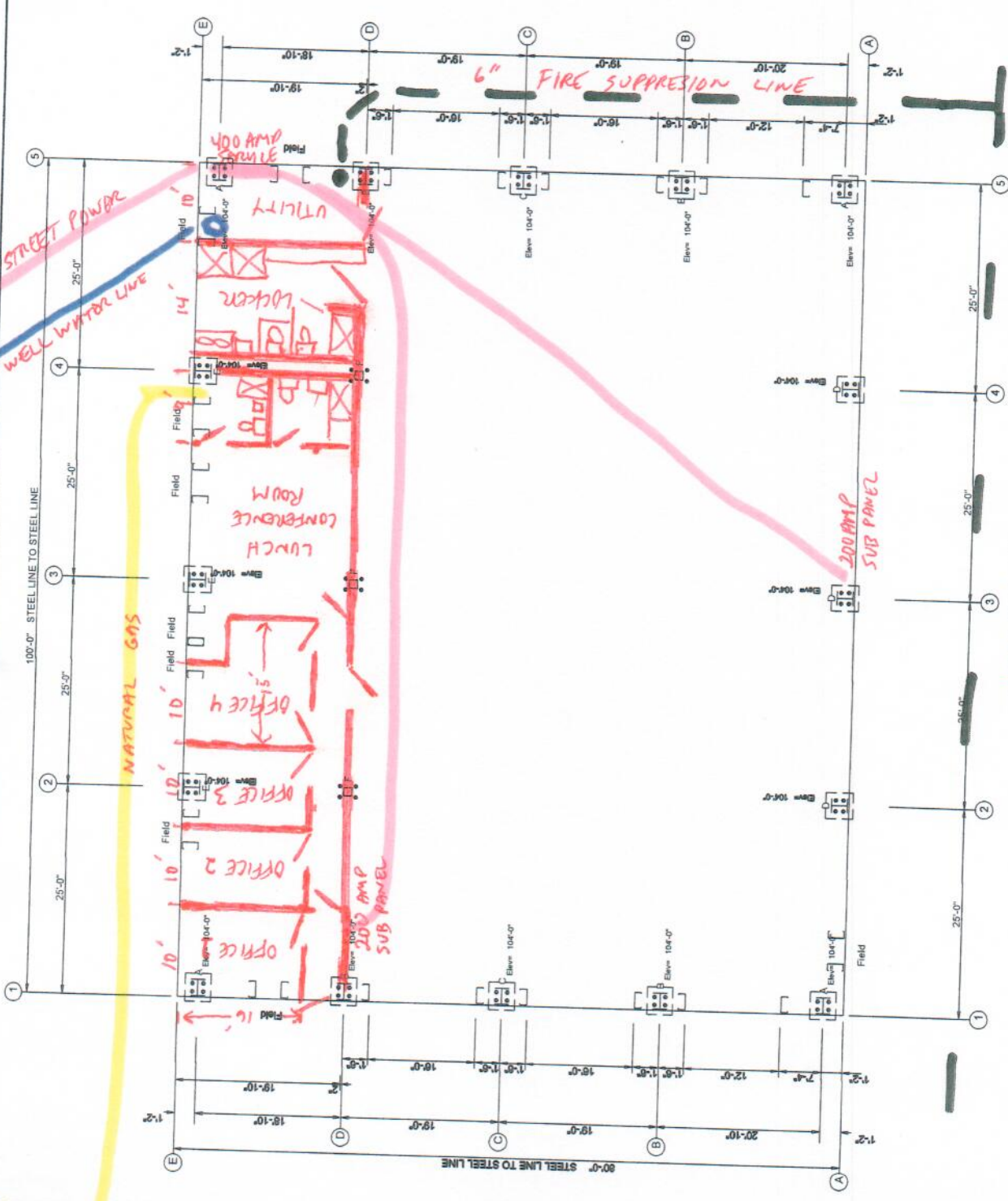
All proposals must be submitted to the Town of Plaistow, Office of the Town Manager, 145 Main Street, Plaistow, NH 03865 by Noon on December 28<sup>th</sup>, 2018 in a sealed envelope clearly marked **"Plaistow DPW Garage Gas Pipe/Plumbing Proposal"** on the outside of the "sealed" envelope. The Town of Plaistow reserves the right to waive any informalities or to accept or reject any or all proposals, as deemed to be in the best interest of the Town.



*Drawings*

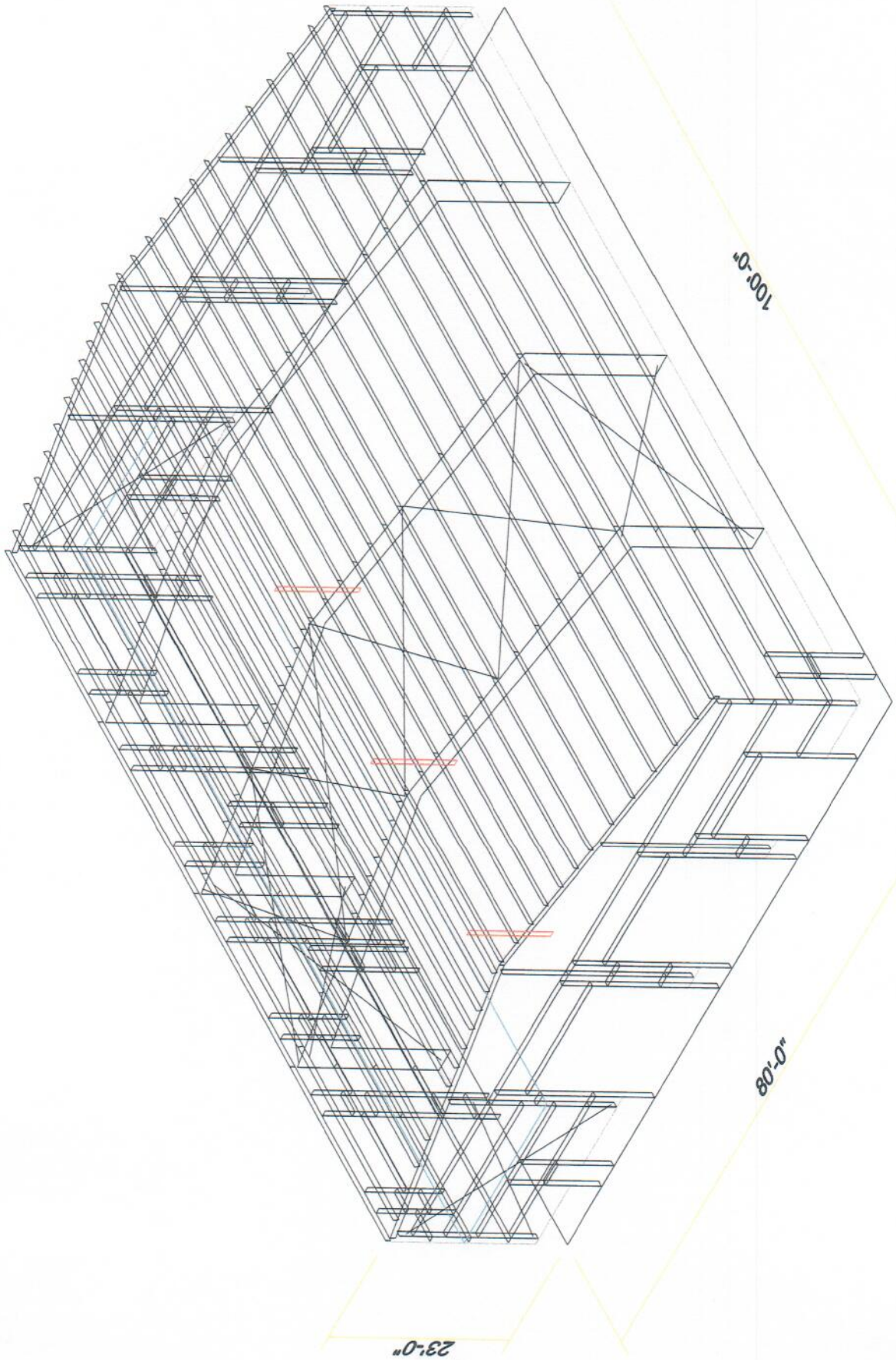
*Preliminary Construction*

REV.	DESCRIPTION	DATE
DRAWING STATUS		
Plastow Building		
<small>THESE DRAWINGS HAVE BEEN PREPARED FOR VISUALIZATION PURPOSES ONLY. THEY ARE PRELIMINARY AND SHOULD NOT BE USED FOR CONSTRUCTION. ANY CHANGES TO THESE DRAWINGS MUST BE MADE BY THE DESIGNER. THESE DRAWINGS HAVE BEEN PLACED AND DESIGNATED FOR FABRICATION.</small>		
F.O.4764-2-1		
ENG:	DWN:	APPD:
DATE: 8/14/18	REVISION: 0	REVISION: 0
Plastow Building		
80'-0" x 100'-0" x 23'-0"		



ANCHOR BOLT PLAN  
 NOTE: All Base Plates @ 100'-0" (U.N.)  
 Finished Floor @ 100'-0"







**BOLT TABLE**  
FRAME LINE 1

LOCATION	QUAN	TYPE	DIA	LENGTH	QUAN	LENGTH
ER-1/ER-2	8	A325	1/2"	1 1/2"		
ER-2/ER-3	8	A325	1/2"	1 1/2"		
ER-3/ER-4	8	A325	1/2"	1 1/2"		
Columns/Ref	2	A325	3/4"	1 3/4"		

**SUPPORT BEAM BOLT TABLE**  
FRAME LINE 1

ID	QUAN	TYPE	DIA	LENGTH	QUAN	LENGTH
1	3	A325	3/4"	1 3/4"	2	

**MEMBER TABLE**  
FRAME LINE 1

QUAN	MARK	PART	LENGTH
1	EC-1	WBX10	17'-1 3/4"
1	EC-2	WBX10	20'-3 7/16"
1	EC-3	WBX18	23'-5 7/16"
1	EC-4	WBX10	20'-7 7/16"
1	EC-5	WBX10	17'-1 3/4"
1	ER-1	W12X16	37'-8 3/8"
1	ER-2	W12X16	2'-10 1/4"
1	ER-3	W12X16	20'-1 1/16"
1	ER-4	W12X16	20'-5 9/16"
2	DJ-1	8X35C16	10'-10 3/8"
4	DJ-2	8X35C16	19'-9 3/4"
2	DJ-3	8X35C16	14'-0 3/4"
1	DH-1	8X35C16	3'-0"
2	DH-2	8X35C16	16'-0"
1	DH-3	8X35C16	12'-0"
3	G-1	8X25Z16	18'-5 1/2"
1	G-2	8X25Z13	18'-5 1/2"
5	G-3	8X25Z16	1'-0"
2	G-4	8X25Z13	18'-6 7/8"
4	G-5	8X25Z16	11 3/8"
1	G-6	8X25Z12	20'-5 1/2"
1	G-7	8X25Z14	20'-5 1/2"
1	G-8	8X25Z16	6'-10"
1	CB-1	CABLE500	24'-2 5/8"
1	CB-2	CABLE500	22'-1 1/4"
1	MB-1	W18X40	18'-7 1/4"
1	JB-1	8X35C16	4'-4 15/16"
1	JB-2	8X35C16	7'-0 15/16"
1	JB-3	8X35C16	4'-8 15/16"
1	JB-4	8X35C16	4'-8 15/16"
2	JB-5	8X35C16	5'-8 1/2"
1	JB-6	8X35C16	4'-2 15/16"
1	JB-7	8X35C16	2'-2 15/16"

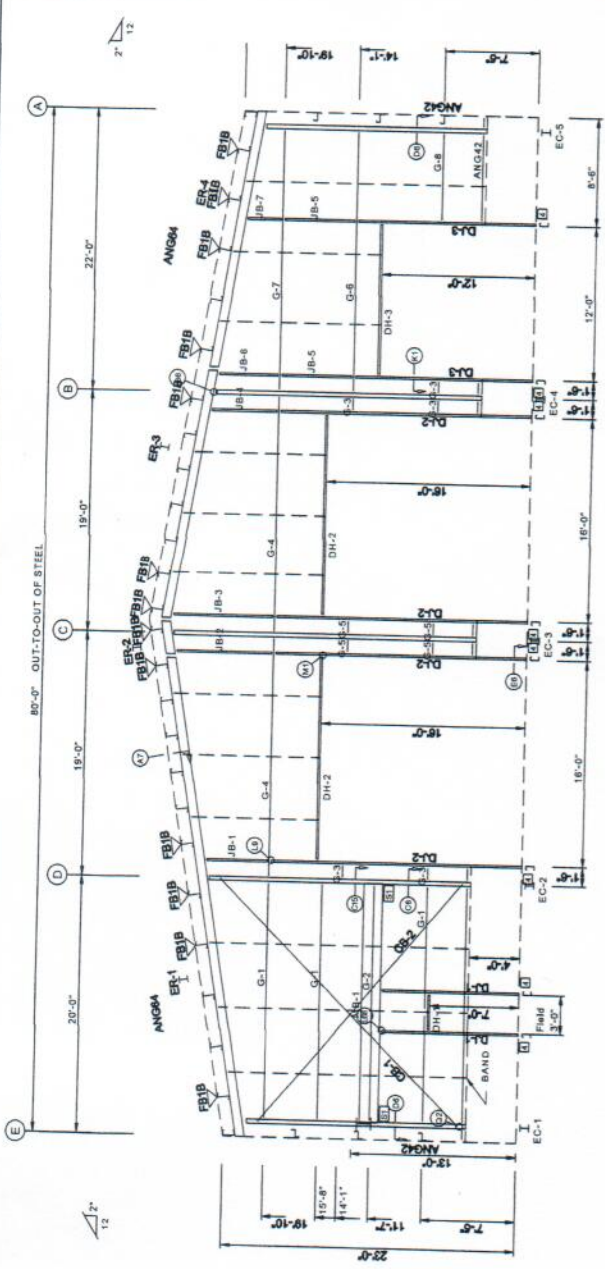
**CONNECTION PLATES**  
FRAME LINE 1

ID	QUAN	MARK/PART
4	8	F1

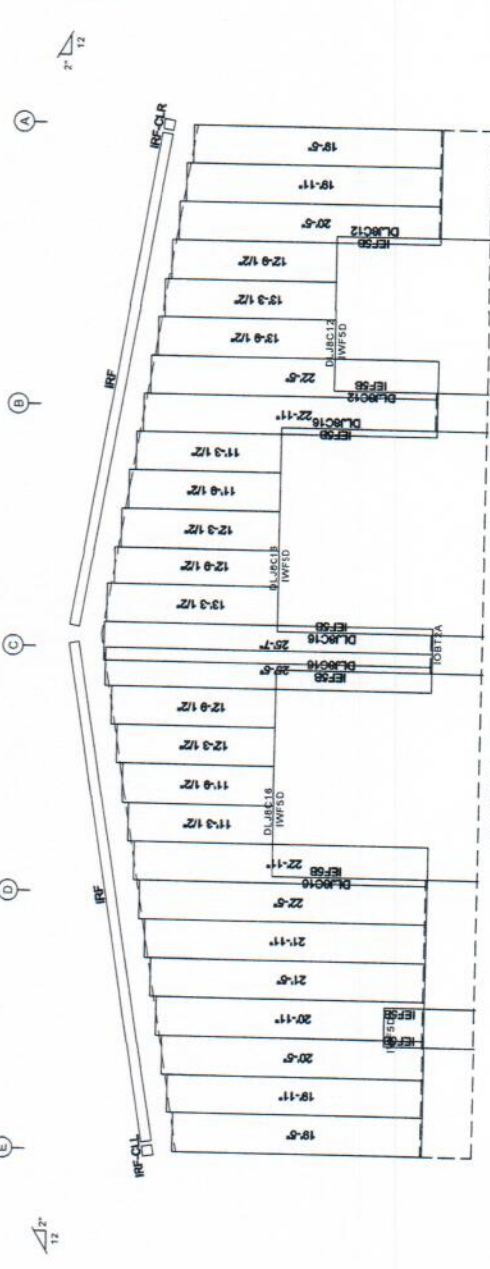
**FLANGE BRACE TABLE**  
FRAME LINE 1

ID	MARK	LENGTH
1	FB1B	11'-7"

**Plastow Building**  
DRAWING STATUS  
REVISION HISTORY



ENDWALL FRAMING: FRAME LINE 1



ENDWALL SHEETING & TRIM: FRAME LINE 1

PANELS: 26 GA. R - TBD

**GENERAL NOTES:**

1. Use TEK55WW screws in place of SD150 panel screws at all 10 gage members.
2. See detail C7A for field coping of coldform endwall column flange braces.
3. All connections to door or window/jamb where the clip is not designated in the clip table / drawing are made with "JC" clips (#= Girt Depth).

- TRIM COLORS**
- EAVE TRIM = TBD
  - BASE TRIM = TBD
  - DOOR TRIM = TBD
  - RAKE TRIM = TBD
  - LINER TRIM = Liner panel color
  - SOFFIT TRIM = Soffit panel color
  - CORNER TRIM = TBD
  - GUTTER =
  - DOWNSPOUTS =
- TABLE IF LINER TRIM OR SOFFIT PANEL IS INDICATED ON BUILDING PANEL.



# Plastow Building

## DRAWING STATUS

### REVISION HISTORY

REV.	DATE	DESCRIPTION

THESE DRAWINGS HAVE BEEN GENERATED FOR VISUALIZATION PURPOSES ONLY. THEY ARE PRELIMINARY AND SHOULD NOT BE USED FOR FABRICATION. AFTER AN ORDER HAS BEEN PLACED AND DESIGNATED FOR FABRICATION.

F.O.4764-2-1

Plastow Building  
80'-0" x 100'-0" x 23'-0"  
REVISION: 0  
DATE: 8/14/18  
APPD: 0

BOLT TABLE			
LOCATION	QUAN	TYPE	DIA
ER-5/ER-6	8	A325	1/2"
ER-6/ER-7	8	A325	1/2"
ER-7/ER-8	8	A325	1/2"
Columns/Raf	2	A325	3/4"

SUPPORT BEAM BOLT TABLE			
ID	QUAN	TYPE	DIA
1	3	A325	3/4"

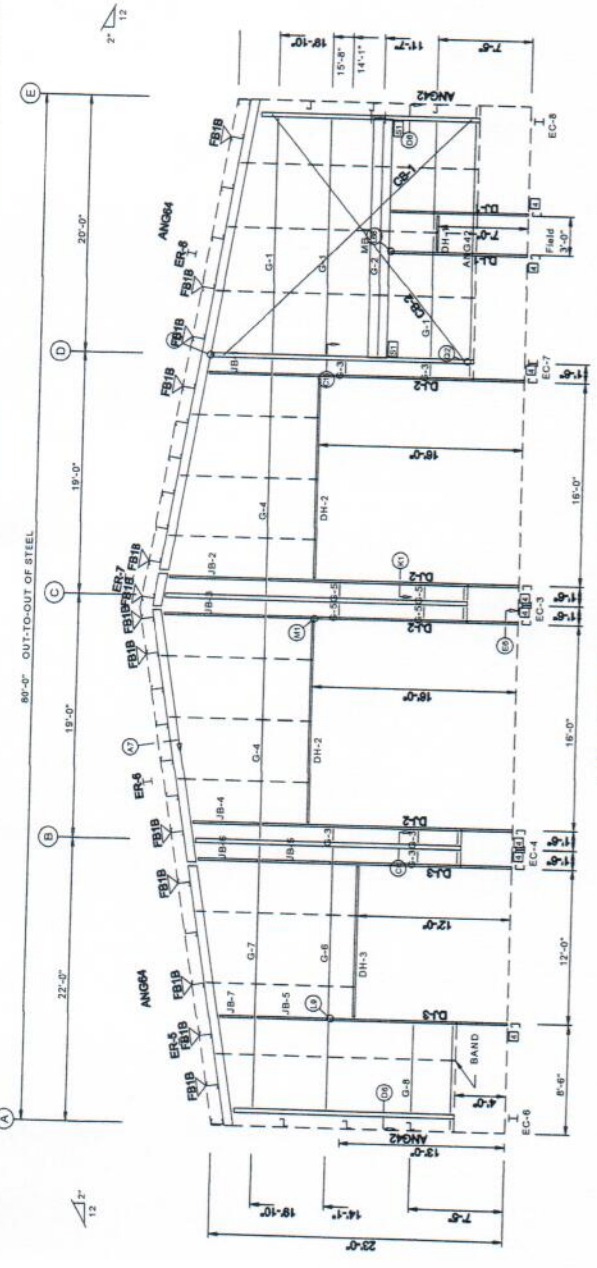
MEMBER TABLE			
QUAN	MARK	PART	LENGTH
1	EC-3	W8X18	23'-5 7/16"
1	EC-4	W8X10	20'-7 7/16"
1	EC-6	W8X10	17'-1 3/4"
1	EC-7	W8X10	20'-3 7/16"
1	EC-8	W8X10	17'-3 3/4"
1	ER-5	W12X16	20'-3 9/16"
1	ER-6	W12X16	20'-1 1/16"
1	ER-7	W12X16	2'-10 1/4"
1	ER-8	W12X16	37'-8 3/8"
2	DL-1	8X35C16	10'-10 3/8"
2	DL-2	8X35C13	19'-9 3/4"
2	DL-3	8X35C16	14'-0 3/4"
1	DH-1	8X35C16	16'-0"
2	DH-2	8X35C16	3'-0"
1	DH-3	8X35C16	12'-0"
3	G-1	8X25Z16	18'-5 1/2"
1	G-2	8X25Z13	1'-0"
5	G-3	8X25Z13	18'-6 7/8"
2	G-4	8X25Z13	11 3/8"
4	G-5	8X25Z14	20'-5 1/2"
1	G-6	8X25Z14	20'-5 1/2"
1	G-7	8X25Z14	6'-10"
1	G-8	8X25Z16	24'-2 5/8"
1	CB-1	CABLE500	22'-1 1/4"
1	CB-2	CABLE500	18'-7 1/4"
1	MB-1	W18X40	4'-4 15/16"
1	JB-1	8X35C16	7'-0 15/16"
1	JB-2	8X35C16	7'-4 15/16"
1	JB-3	8X35C16	4'-8 15/16"
2	JB-4	8X35C16	5'-8 1/2"
1	JB-5	8X35C16	4'-2 15/16"
1	JB-6	8X35C16	2'-2 15/16"

CONNECTION PLATES		
FRAME LINE 5	QUAN	MARK/PART
4	8	f1

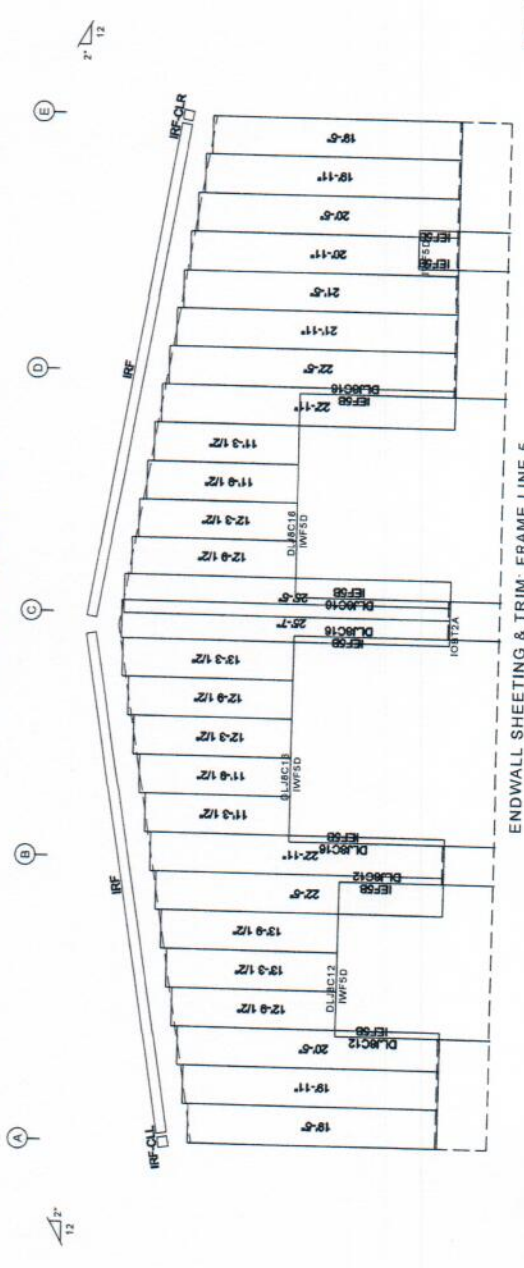
  

FLANGE BRACE TABLE		
FRAME LINE 5	MARK	LENGTH
1	FBTB	1'-7"

TRIM COLORS	
EAVE TRIM	= TBD
CORNER TRIM	= TBD
BASE TRIM	= TBD
DOOR TRIM	= TBD
RAKE TRIM	= TBD
LINEAR TRIM	= TBD
SOFFIT TRIM	= Soffit panel color
* ONLY APPLICABLE IF LINER TRIM OR SOFFIT PANEL IS INDICATED ON BUILDING ORDER.	



ENDWALL FRAMING: FRAME LINE 5



ENDWALL SHEETING & TRIM: FRAME LINE 5

- GENERAL NOTES:**
1. Use TEK5WW screws in place of SD150 panel screws at all 10 gage members.
  2. See detail C7A for field coping of coldform endwall column flange braces.
  3. All connections to door or window jambs where the clip is not designated in the clip table / drawing are made with JCH clips (#= Girt Depth).

PLASTOW BUILDING  
DRAWING STATUS  
REVISION HISTORY

REV. DATE DESCRIPTION  
F.O.4764-2-1  
80'-0" x 100'-0" x 23'-0"  
DATE: 8/14/18  
REVISION: 0  
APPD: DWN: ENG:

THESE DRAWINGS HAVE BEEN GENERATED FOR VISUALIZATION PURPOSES ONLY. THEY ARE PRELIMINARY AND SHOULD NOT BE USED FOR FABRICATION. AFTER AN ORDER HAS BEEN PLACED AND DESIGNATED FOR

MEMBER TABLE			
Mark	Web Depth Start/End	Web Plate Thick Length	Outside Flange W x Thk x Length
RF1-1	35.0/35.0	0.250 161.5	6 x 1/4" x 120.0
RF1-2	39.0/35.4	0.313 94.6	6 x 1/2" x 95.6
RF1-3	35.4/30.9	0.250 120.0	8 x 1/4" x 35.9
RF1-4	36.0/36.0	0.313 60.0	6 x 3/8" x 120.1

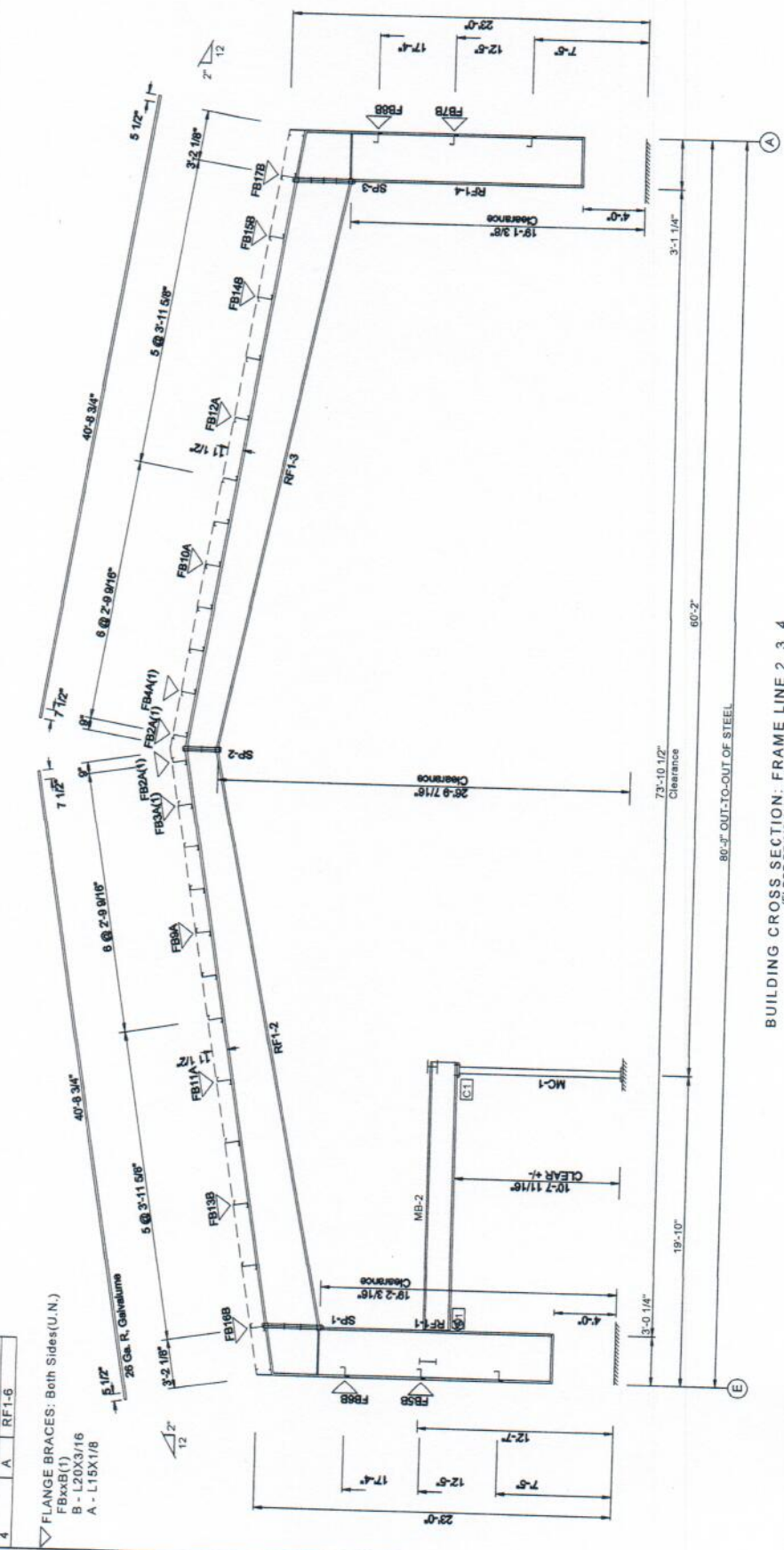
SUPPORT BEAM BOLT TABLE			
ID	Qty	Type	Length
MC-1	4	A325	1.250
MB-2	2	A325	2.000

SUPPORT COLUMN BOLT TABLE			
ID	Qty	Type	Length
SP-1	4	A325	1.250
SP-2	4	A325	0.750
SP-3	4	A325	1.250

ALTERNATE MEMBERS			
Frame Line	OID	Mark	Length
3	A	RF1-5	10'-7 1/16"
4	A	RF1-6	17'-2 5/16"



GENERAL NOTES:

- See Detail Sheets for Connection Information.
- See Shipping List for Flange Brace Lengths.

BUILDING CROSS SECTION - FRAME LINE 2 3 4  
(FLOOR BEAMS SHOWN AT FRAME LINE 2)