

Plaistow's Town Forest is made up of over 400 acres of unique and beautiful open space. It is located in the northwest section of Plaistow on the west side of Main St (Rt.121a). The forest is an important part of Plaistow and preserving it for future generations is a primary goal of Plaistow's Conservation Commission.

In 2014 Plaistow joined with Southeast Land Trust to place the forest in a conservation easement. The easement ensures that the forest will be protected from attempts in the future to develop or change the natural structure of the forest.

The trails and bridges in the Town Forest have been constructed by Eagle Scouts from Troop 18 and other volunteers.



Partial funding for this map and trail improvements was provided by the Recreational Trails Program, a Federal Highway Administration program managed through the NH Bureau of Trails



Rules of the Forest

These are for the benefit of everyone using the forest, and to help preserve the forest for future use by others.

1. **Hours** of operation Sunrise to Sunset
2. **No** motorized vehicles
3. **No** littering
4. **No** open fires
5. **No** camping
6. **Remove all pet waste** All pets must be on a leash while in the forest
7. **Respect** others by using a headset while playing audio devices
8. **No** cutting trees or brush without prior approval from Plaistow Conservation Commission and Board of Selectmen

Please wear bright-colored clothing during hunting season.

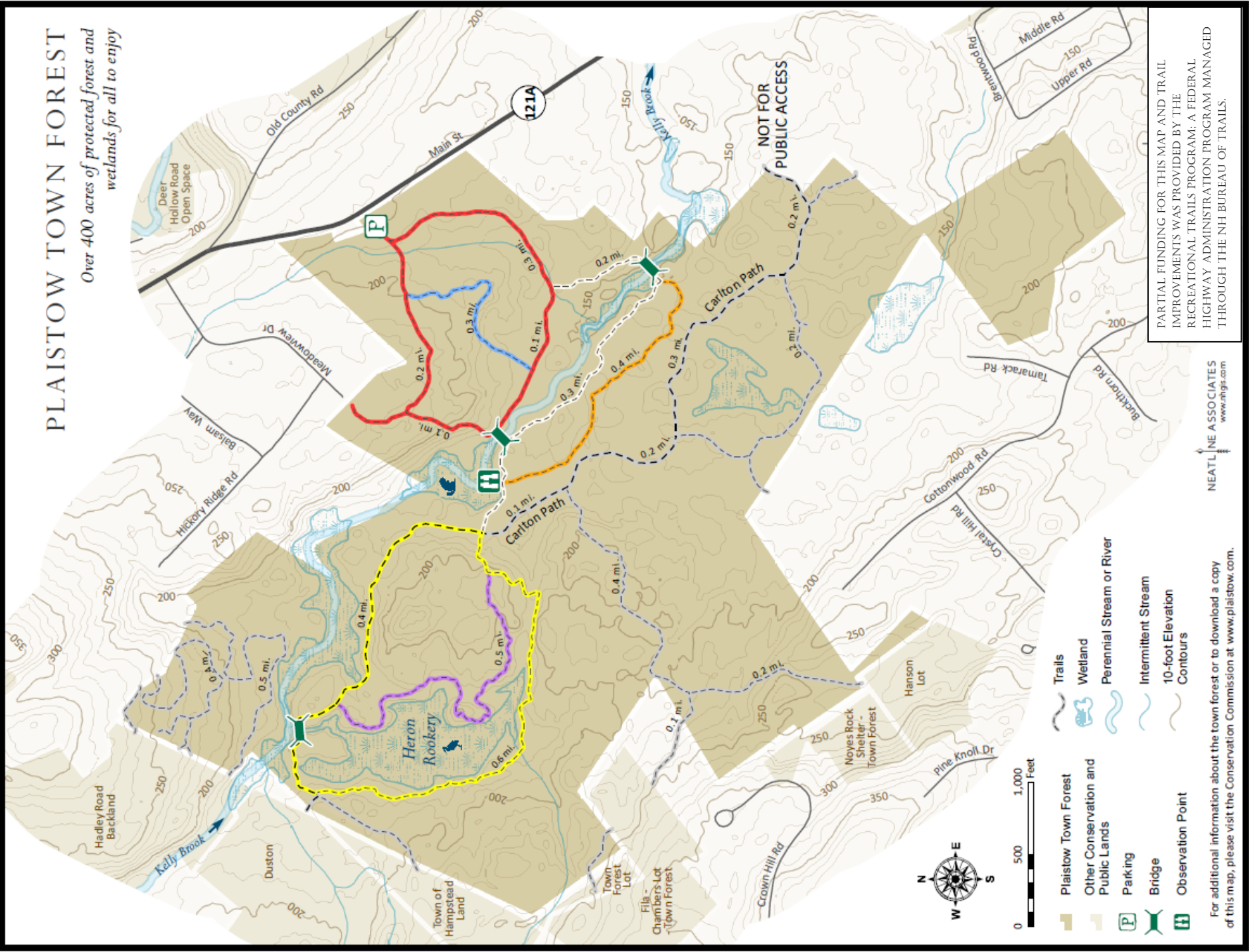


Town of Plaistow

145 Main St
Plaistow, NH 03865
Phone (603) 382-5200
Fax (603) 382-7183

PLAISTOW TOWN FOREST

Over 400 acres of protected forest and wetlands for all to enjoy



PARTIAL FUNDING FOR THIS MAP AND TRAIL IMPROVEMENTS WAS PROVIDED BY THE RECREATIONAL TRAILS PROGRAM, A FEDERAL HIGHWAY ADMINISTRATION PROGRAM MANAGED THROUGH THE NH BUREAU OF TRAILS.

NEATLINE ASSOCIATES
www.ningr.com

For additional information about the town forest or to download a copy of this map, please visit the Conservation Commission at www.plaistow.com.